



HEAD OFFICE (NISKU)

1304 - 8th Street
Nisku, Alberta T9E 7M1

T 780-955-2251

F 780-955-3433

E info@jacowelding.com

STEEL FABRICATION EXPERT PRODUCTS

PRODUCT CATALOG

TABLE OF CONTENTS

Products shown are just a sample of Ja-Co's capabilities. Ja-Co is not limited to what is shown.

PRODUCTS

API 4F – PSL 1 & 2	13	API 16A	27
500K Center Sections	13	Swivel Drill Spool Double	27
600K Center Sections	14	Studded Adaptor Drill	27
900K Center Sections	15	Spool (Diverter Spool)	27
-	16	Spacer Spool	27
Capabilities	17		
Complete Center Sections / Retrofits	18	TC-44 TANKS	28
		Fuel Tanks	28
API 6A – PSL 1, 2 & 3	19	MOVING SYSTEM	29-30
Blind Flanges	19	Wheel System	29-30
Target Flanges	19		
Threaded Companion Flanges	19	TRANSPORT SYSTEM	31
Weld Neck Flanges	19	B.O.P. Lift Plate	31
Studded Crosses	19	B.O.P. Transport Cradle	31
Adaptor Flanges	19	B.O.P. Handling Cart	31
Flange x Union Adaptor	19	MISCELLANEOUS Shipping Skids	31
Blind Hub	19		
Weld Neck Hub	19	MUD SYSTEM	32
API 6B Flange & Bolt Dimensions	21-22	Pumps and Spacers	32
		Remote Degassers	32
PIPE FITTINGS	20	Transfer/Scalping Tanks	33
90° Elbow	20	Mud Tanks	34
45° Elbow	20	Suitcases	34
Cross	20	Flare Tank Gas Busters	35
Concentric Reducer	20	Manifold Buildings	35
Straight Tee	20		
End Cap	20	SUPPORTING BUILDINGS	36
Weld-O-Let	20	Boiler Buildings	36
Custom Fittings	20	Combination Buildings	36
		Generator Buildings	37
API 8C – PSL 1	23	Water Tank/Doghouse	37
Monogrammed Sheaves	23	Top Drive Support Unit	38
Crown Cluster Assembly (non API)*	23	Doghouses (Driller Side/Off Driller Side Buildings)	38
Fast Line Sheave	23		
Deadline Sheave	23	RATED PIPE RACKS	39
Deadline Anchors	23	Engineered Pipe Racks Engineered	39
Traveling Blocks	24	Low Profile Pipe Racks	39
Block to Hook Adaptor	24		
Guide Dollies	24	PIPE TUBS	40
API 8C Dimensions	25-26	Non-Hydraulic Pipe Tub	40
		Hydraulic Pipe Tub	40
		Custom Pipe Tub	40

CATWALKS	41-42	HARDWARE	51
Hydraulic Catwalk	41-42	5" Furniture Hinge (3 Piece)	51
		7" Barrel Hinge	51
MISCELLANEOUS	43	7" Man Door Hinge	51
Equipment Attachments	43	Door Box	51
Miscellaneous Fabrication	43	Spring Ball Latch	51
Centrifuge Stand	44		
River Flume	44	FURNITURE	52
Piping	44	Lockers	52
		Cabinets	52
STRUCTURAL	45	Sitting Benches (Storage)	52
Structural Buildings	45	Bolt Bins	52
Miscellaneous Structural	46	Knowledge Box	53
		Battery Box	53
		Oil Bins	53
		Plug Board Cabinet Tool	53
		Board	53
COMPONENTS			
TANK COMPONENTS	47	TIE DOWNS	54
Bridge Valve	47	Furniture Tie Downs	54
Trough Dumps	47	V-Block Motor Tie Down	54
Arctic Dumps	47	Pump/Motor Guide	54
Mud Guns Mixing	47		
Hoppers	47	MISCELLANEOUS	55
Chemical Barrels	47	Fire Pits	55
Equalizers	48	Ground Rods	55
Agitators	48	Escape Line Anchor	55
Degassers	48	Mouse Hole Springs	55
Pump Stands	48	Handrails	55
		Stairs	55
CATWALK COMPONENTS	49	Custom Burns	56
Catwalk Sheave	49	Walkways	56
Deck Pins	49	Tarp Strapping	56
Drive Drums	49	Trolley Beams	56
Vertical Cable Guide	49	Boom Arms	56
Transition Roller	49	Hatch Ways	56
Pivot Box	49	Retrieval Arms	57
Electrical Box	49	Belt Guard	57
Skate Guard	49	Folding Light Stand	57
Cylinder Pads	50	3 Stage Light Stand	57
Horizontal Roller	50	Air Flow Hatch Way Miscellaneous	57
Idle Sheave Assembly	50	Transport Systems	57
Single Drive Drum Adaptor	50		
Large Catwalk Skate Small	50		
Catwalk Skate	50		

ABOUT JA-CO



Ja-Co Welding & Consulting Ltd. is a modern 110,000 sq. ft. Oilfield and Structural Steel Fabricating Facility with a CNC Machine Shop located in the Nisku Business Park.

In business since 1987, Ja-Co has grown with the demands of its customers and tailored its shop practices, employees and equipment to reflect the forefront of cutting edge technology. Ja-Co Welding is C.W.B, API 4F, 6A, 8C, 16A, and ISO 9001:2015 certified.

WHY JA-CO

At Ja-Co Welding & Consulting Ltd. we are constantly adapting to the demands of the industry in order to provide the highest quality of product.

Our goal is to maintain customer satisfaction and adhere to the different requirements each customer has as well as complying with the latest in industry standards and technology. With our experienced upper management and design team, we are able to make any vision a reality.

VISION

At Ja-Co Welding & Consulting Ltd., we strive to provide the steel fabrication industry with quality products. Our services range from complete rig manufacturing, structural steel, machining and custom fabrication. With our engineering, design and drafting team we ensure your vision will emerge effortlessly.

Through the use of cutting edge technology, we are able to provide our customers with a superior product that will exceed their expectations. Since 1987, Ja-Co Welding & Consulting Ltd. has expanded to become one of the largest fabrication shops in the area.

Our company places high value on a balanced work/home lifestyle by providing incentives and benefits that have been optimized to suit our employees and their families. We look forward to future growth by responding to the changing demands of our customers and industry standards.

SAFETY

At Ja-Co Welding & Consulting Ltd. our employees are our number one resource. Their personal safety and that of others is paramount. Maintaining our PICS membership, ComplyWorks and C.O.R certification through yearly safety audits, daily and monthly safety meetings, and thorough shop inspections are just some of the things we do to keep our employees safe.

JA-CO FACILITY

A wide-angle, black and white photograph of a large industrial fabrication shop. The space is filled with various pieces of heavy machinery, including lathes, mills, and welding equipment. Large pipes and structural steel components are visible, some resting on stands and others being worked on. The shop has a high ceiling with exposed steel beams and lighting fixtures. In the background, there are large bay doors and a person standing near one of them. The overall atmosphere is one of a busy, well-equipped manufacturing facility.

Ja-Co Welding & Consulting Ltd. is divided into three spacious fabrication shops/offices and one state of the art machine shop. All locations are CWB certified and are equipped with top of the line equipment and technology.

FACILITY

Our first location is built with 9 bays and 21 cranes. These cranes vary in hook height and capacity (capacity ranging from 5 to 15 tons). The yard has a rig up pad accompanied by a test hole and rig matting/gravel. All of our small oilfield, custom fabrication, processing and CNC burn table jobs are manufactured in this location. The office provides a large board room for customer use.

Our second location is built with 2 large drive-thru bays, with 30' x 30' bay doors, and 14 cranes. Each crane has a hook height of 40' and anywhere from 3 tons to 15 tons capacity. This yard also has a rig up pad, with full rig power and concrete. All of our large oilfield buildings, substructures and masts are manufactured in this location. This location is API 4F and ISO 9001:2015 certified. The office is home to a large state of the art boardroom equipped with a projector and conferencing equipment. Additional offices with full networking access are also available for customer/consultant use.

Our third location is built with 2 drive-thru bays measuring 130' long by 35' wide. This shop also has 16 cranes, each with a 32' hook height and a 5 ton capacity it is also API 4F and ISO 9001:2015 certified.

Our machine shop is built with 6 bays and 3 cranes. Each crane has an 18' hook height and 10 ton capacity. Housing top of the line CNC & manual equipment, along with a water jet table and CNC plasma table (5 axis). This location is API 6A, API 8C, and API 16A certified.

MACHINES

OKUMA VTM 2000 YB

5-axis vertical lathe
Max machining Ø of 94"
Max work piece load of 22,000 lb
55" Z-axis travel

OKUMA VTM 1200 YB

5-axis vertical lathe
Max machining Ø of 60"
Max work piece load 5,000 lb
42.5" Z-axis travel

OKUMA MULTUS B400II

Dual spindle multifunction turning center
Ø 27.95" max swing
18" chucks
80" Z-axis travel
+/- 4.53" Y-axis travel
225° B-axis swing

OKUMA LB 4000 MY

Multifunction turning center
Ø 26.38" max swing, Ø16.9" max turn
88" Z-axis travel
± 2.76" Y-axis travel
15" hydraulic chuck
4" spindle bore
Helical cutting option
Ø 9 ¼" steady rest

OKUMA MILLAC 761V II

60" x 30" x 33" axis travel (X, Y, Z)
Rotary axis with 12" chuck, 14" swing
HP Coolant

OKUMA MULTUS U4000

Ø26" max swing
80" between chuck faces
18" chuck
11" Y-axis travel
225° B-axis swing
HP Coolant

OKUMA GENOS M560-V

40" x 24" x 23" axis travel (X, Y, Z)
HP Coolant

HAAS ST-30 SSY CNC LATHE

10" chuck
Servo bar feeder
Automatic parts catcher
High-torque live tooling with C-axis 16" x 23" max capacity
3.5" spindle bore
2.00" Y-axis travel

HAAS VF-9 CNC MILL

84" x 40" x 30" axis travel (X, Y, Z)
Rotary axis with 12" chuck 30+1 tool changer

EBF PLASMA TABLE

Dual 400 amp plasmas with beveling capabilities – plasma up to 3"
Dual oxy torch cutting – oxy cut up to 8"
10' x 44' table
Drill/tap head
Drill up to 2 1/4"
Tap up to 1"

MGM3100 MILLENNIUM BURN TABLE

8' x 42' cutting area
Up to 1.5" thick material

MGM2500 MILLENNIUM BURN TABLE

10' x 48' cutting area
Up to 1.5" thick material with plasma
Up to 6" thick material with oxy

MODERN MANUAL LATHE

22" x 78" max capacity
16" chuck

GEKA HYDRACROP 220 MAT PROC

Shear of flatbars- 30" x ¾"
Shear of solid bars – 2 3/8" diameter
Punching power- 1 ½" x 1 ½"

HYDMECH SAW'S MAT PROC

7 fully programmable and automatic
21" x 30.5" capacity

KAO MIN KMR-1600DH RADIAL DRILL

64" x 36" base work area 32 7/8" vertical arm travel

HAAS VF-6 CNC MILL

64" x 32" x 30" axis travel (X, Y, Z)
Rotary axis with 12" chuck
24+1 tool changer

MITSUBISHI MWX4 WATER JET

20' x 10' cutting area
Dual cutting heads
KMT Streamline Pro 125 pump 90,000 psi cutting pressure
Can cut up to 8" thick material

HAAS VF-2 SSYT CNC MILL

30" x 20" x 20" axis travel (X, Y, Z) 24+1 tool changer

SERVICES

RIG UP PAD

Our first pad is a 90' x 150' level cement pad with a rig up shack. The yard around the pad is gravel and can be used for additional length and width if required. It is sourced with 280, 460 and 600 volt power.

Our second pad is a 250' x 150' level gravel pad, also sourced with 280, 460 and 600 volt power and a rig up shack. This pad has a 9 5/8" cased test hole to a depth of 103 m.

Our third pad is the largest of the three. It is a level gravel pad which can be as large as required. This pad is not equipped with a rig up shack or power. Its primary use is for rigs with very large footprints, or when the other pads are in use.

PORTABLE WELDERS (24 HR SERVICE)

Ja-Co Welding & Consulting Ltd. offers a fleet of fully rigged portable welders to complete your onsite fitting and welding requirements. Our welders are certified to CSA standards W47.1 & W59.

EQUIPMENT RECERTIFICATION

- CAODC 1,000 day recertification for Masts, Sub-structures and Overhead Equipment.
- Overhead Equipment API-8B Compliance recertification
- TC44 1 year and 5 year inspection and recertification.

HYDROTESTING

Ja-Co has the ability to perform hydrotesting on pressure containing equipment up to test pressures of 30,000 psi.

All equipment including ASME piping, API 6A, API 16A, and API 16C equipment are hydrotested at our in-house facility.

FLAME HARDENING

Ja-Co offers flame hardening services. This process is currently used in our hoisting sheaves but is applicable to any carbon steel product that requires localized surface hardening.

This simple yet highly effective process is low cost compared to alternative forms of surface hardening. Flame hardening is suitable for small batches of parts and irregular shaped parts and does not result in "mass-distortion" of the part. This process also produces good results when used on steels with lower carbon content (allowing the use of cheaper steels).

Torch heads that can get up to 210 degrees of hardness coverage for concave surfaces (sheaves).

ENGINEERING / DESIGN

Ja-Co is an APEGA Permit Holder with licensed engineers and offers a variety of in-house engineering services that include:

- Design and equipment certification to meet regulatory requirements of OH&S, and other regulatory bodies as applicable.
- Standard and custom TC44 tank designs to meet Transport Canada B620 and TC44 compliance. Our B620 licensed engineers can help develop cost effective designs that meet your needs.
- Creation and optimization of new and custom equipment designs, certified to applicable standards as required.
- Design of a wide variety of high pressure piping components and systems to meet API and ASME requirements.

CUSTOM FORMING

HYDRAULIC PRESS BRAKES

24'-0" x 1500 Ton
20'-0" x 650 Ton
16'-0" x 400 Ton
12'-0" x 400 Ton
12'-0" x 250 Ton

PLATE ROLLS

10'-0" x 1" Mild steel thickness capacity
10'-0" x 1/2" Mild steel thickness capacity
6'-0" x 3/16" Mild steel thickness capacity

STRUCTURAL ROLLS

Beams, channel, pipe, HSS tube, angle, flatbar
Size and roll radius limitations

HYDRAULIC SHEAR

20'-0" x 3/4" Mild steel thickness capacity
16'-0" x 1/2" Mild steel thickness capacity

CUSTOM ENGINEERED DESIGNS

Ja-Co's engineers respect the fact that our customers are experts in their own fields. We realize that collaborative solutions produce effective and efficient designs that maximize performance, minimize costs and produce timely results. This collaborative approach is a core value of all Ja-Co employees. We are committed to working with you to help you achieve the results you need.

ENGINEERING DESIGN AND ANALYSIS TOOLS

In addition to utilizing a variety of common analysis and documentation tools, the Ja-Co engineering team utilizes FEA analysis which assists in optimizing and troubleshooting designs.

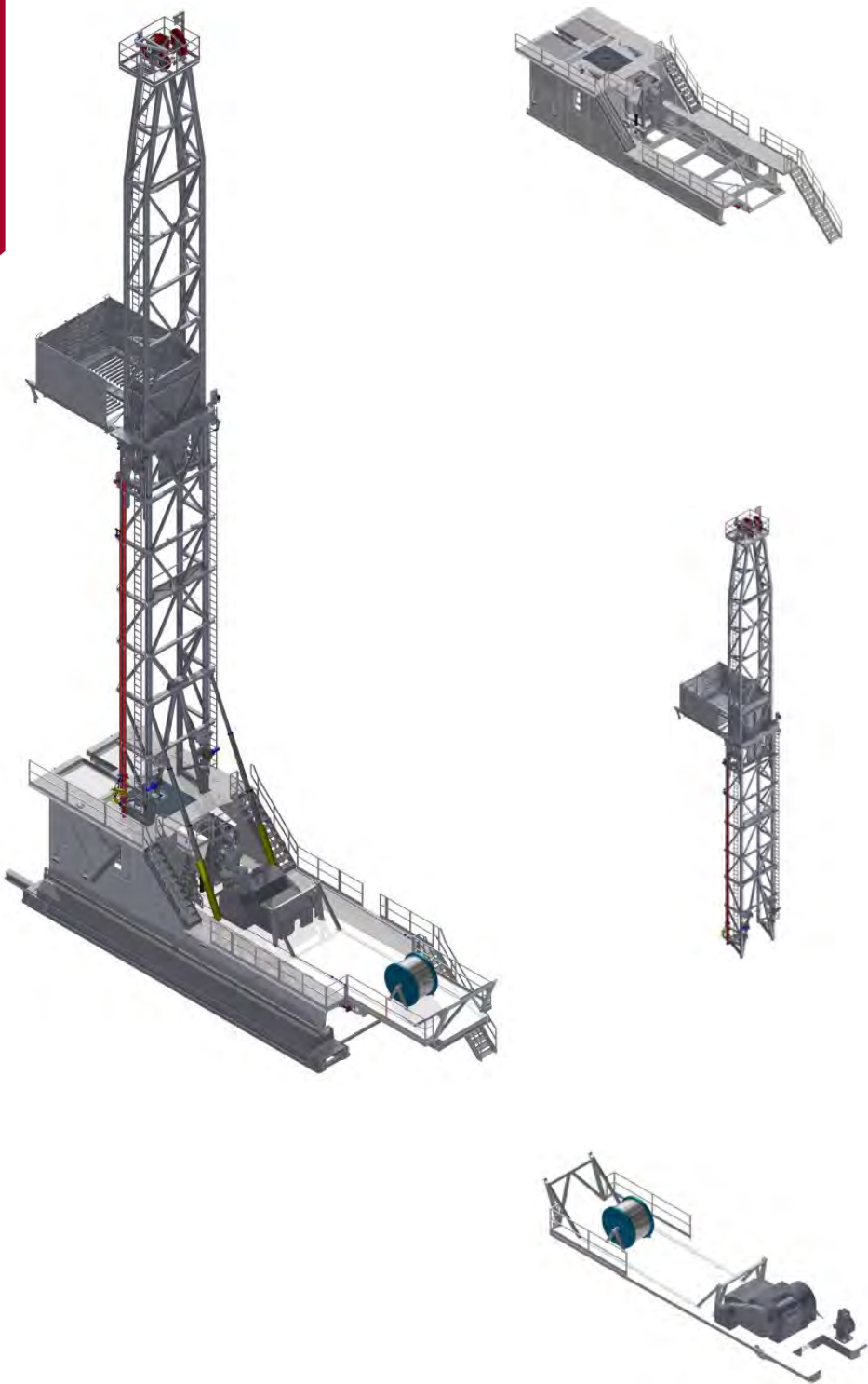
LOCAL PICK + DROP OFF SERVICE

Local drop off and pick up services depending on the size(s) of load

API 4F – PSL 1 & 2

Products shown are just a sample of Ja-Co's capabilities. Ja-Co is not limited to what is shown.

500K CENTER SECTIONS



SUBSTRUCTURE

STYLE

14' step-down

CASING CAPACITY

450,000 lb / 200,160 daN

SETBACK CAPACITY

400,000 lb / 177,920 daN

MAST

STYLE

Telescoping double (106')

MAXIMUM STATIC HOOK LOAD

10 lines = 500,000 lb / 222,400 daN

MAXIMUM STATIC HOOK LOAD

8 lines = 440,000 lb / 195,700 daN

RACKING CAPACITY

4 1/2" PIPE 278 stands in the fingers x 60' /
stand = 16,680' / 5,080 m (+)
collar area racking

DRAWWORKS SKID

MOVING SYSTEM

LINEAR TRAVEL

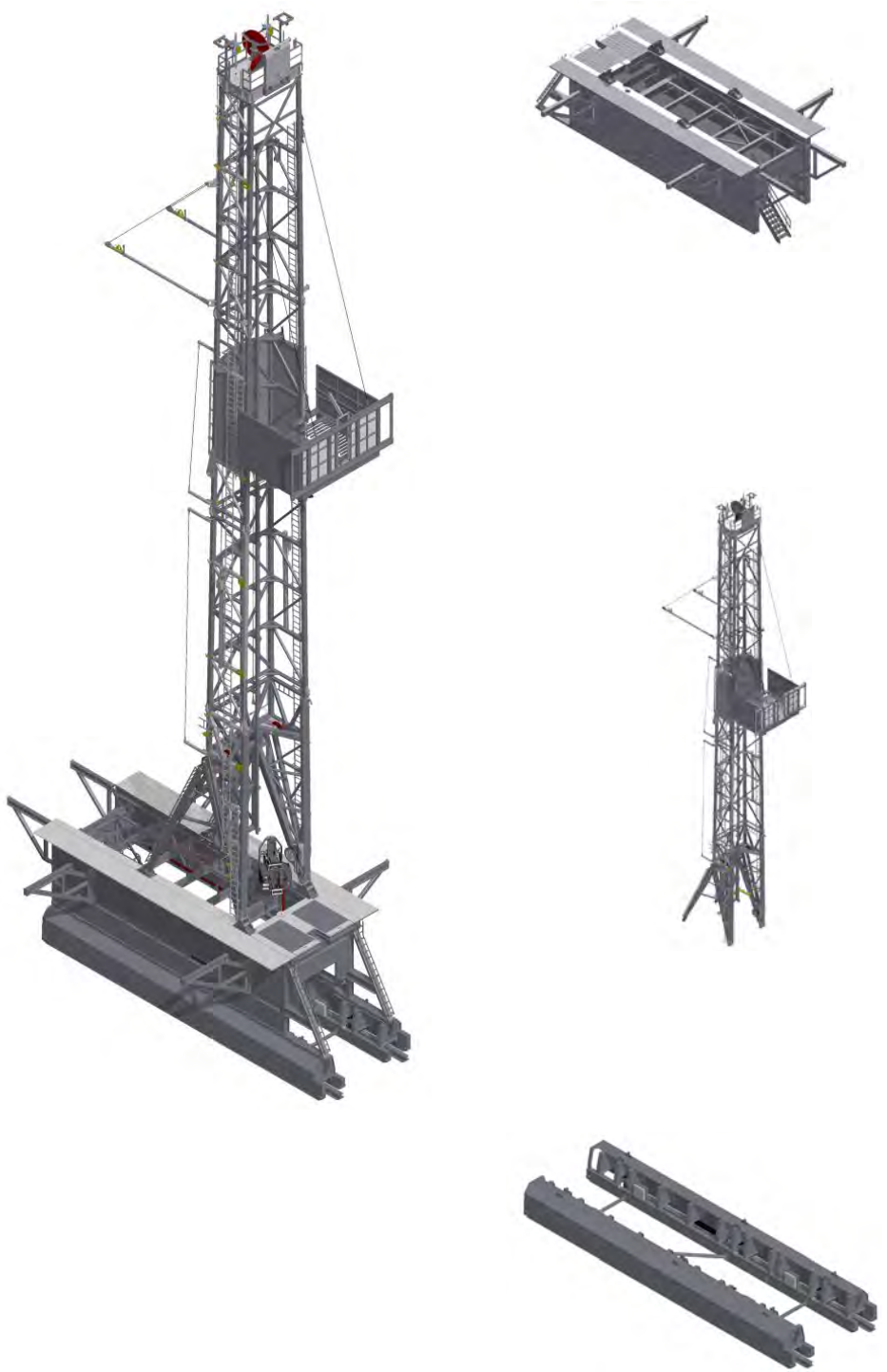
6' cycle

SIDE SHIFT TRAVEL

16" cycle

API 4F – PSL 1 & 2

600K CENTER SECTIONS



SUBSTRUCTURE

STYLE

14'6" one-piece

CASING CAPACITY

550,000 lb / 244,640 daN

SETBACK CAPACITY

500,000 lb / 222,400 daN

MAST

STYLE

Cantilever triple (142')

MAXIMUM STATIC HOOK LOAD

10 Lines = 600,000 lb / 266,880 daN

MAXIMUM STATIC HOOK LOAD

8 Lines = 584,000 lb / 260,000 daN

RACKING CAPACITY

252 stands in fingers (x) 90' /
stand = 22,680' / 6910 m (+)
collar area racking

MOVING SYSTEM

STYLE

5'6" riser

LINEAR TRAVEL

6' cycle

SIDE SHIFT TRAVEL

16" cycle

API 4F – PSL 1 & 2

Products shown are just a sample of Ja-Co's capabilities. Ja-Co is not limited to what is shown.

900K CENTER SECTIONS



SUBSTRUCTURE

STYLE

24' box-on-box

CASING CAPACITY

800,000 lb / 355,840 daN

SETBACK CAPACITY

600,000 lb / 266,880 daN

MAST

STYLE

Cantilever triple (142')

MAXIMUM STATIC HOOK LOAD

12 lines = 900,000 lb / 400,320 daN

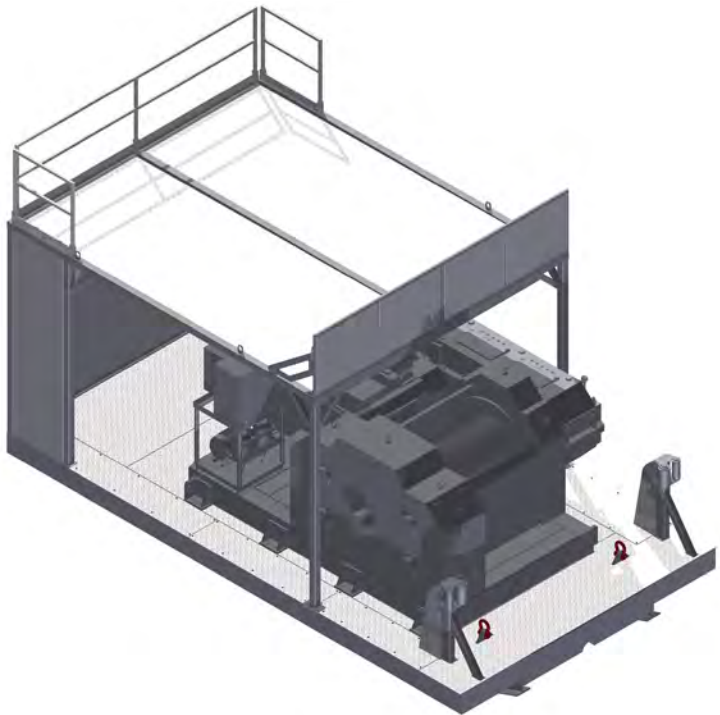
MAXIMUM STATIC HOOK LOAD

10 lines = 875,000 lb / 389,200 daN

RACKING CAPACITY

Of 5 1/2" PIPE 208 Stands x 90' / 27 m per stand and 18,720' / 5,705 m (+) collar area racking

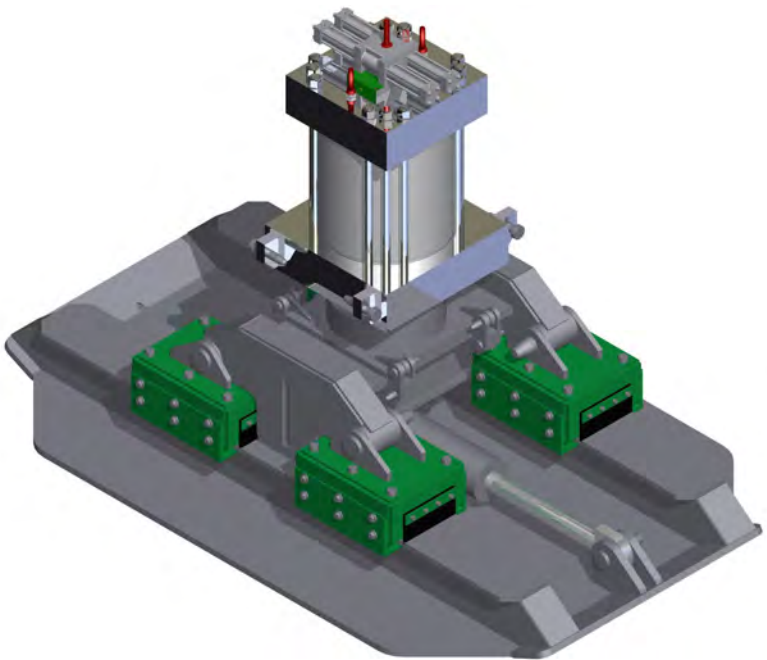
API 4F – PSL 1 & 2



DRAWWORKS SKID

Built integral into the substructure, depending on dimensional and load restrictions.

Customer defined draw-works to be used.



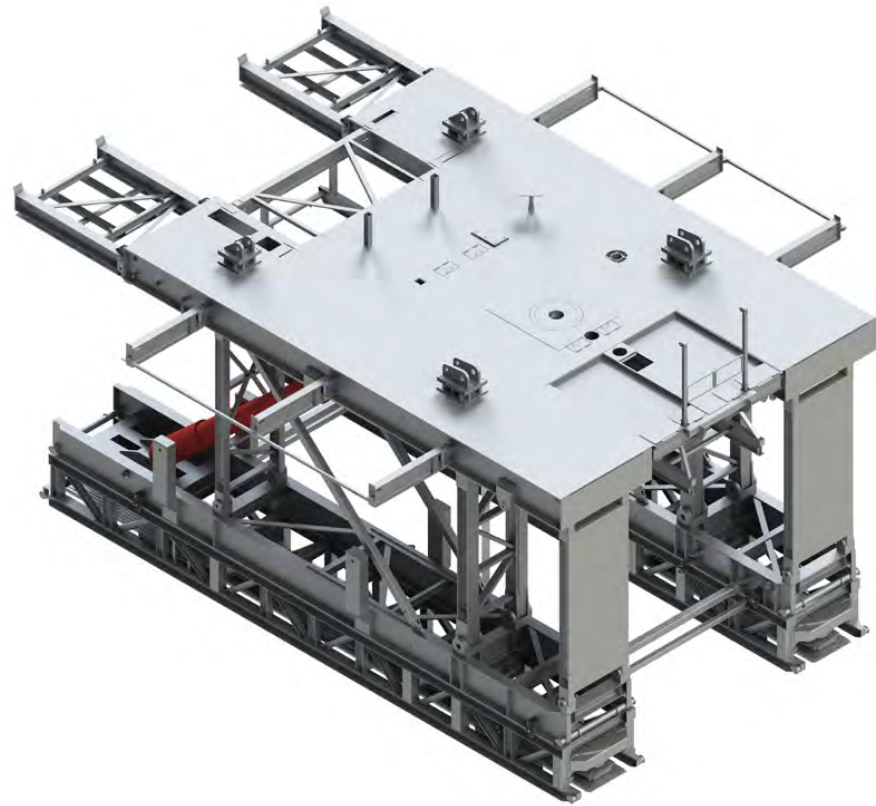
MOVING SYSTEM

TRAVEL

4' iteration (fully automated)

API 4F – PSL 1 & 2

Products shown are just a sample of Ja-Co's capabilities. Ja-Co is not limited to what is shown.



FABRICATION CAPABILITIES AND HIGHLIGHTS

- 50+** Complete center sections 400k-600k (step down substructures, one piece substructures, telescoping double masts, jack knife triple masts)
- 20+** 750k box on box style substructures
- 15+** 750 k swing up substructures
- 35+** 750k masts
- 4+** 900k box on box substructures
- 4+** 900k masts
- 3+** 1000k box on box substructures
- 1+** 1250k Swing Up Substructure
- 20+** linear walking pontoons
- 10+** 360deg jack and pad moving systems

+ numerous replacement subs and mast / additional moving systems

API 4F – PSL 1 & 2

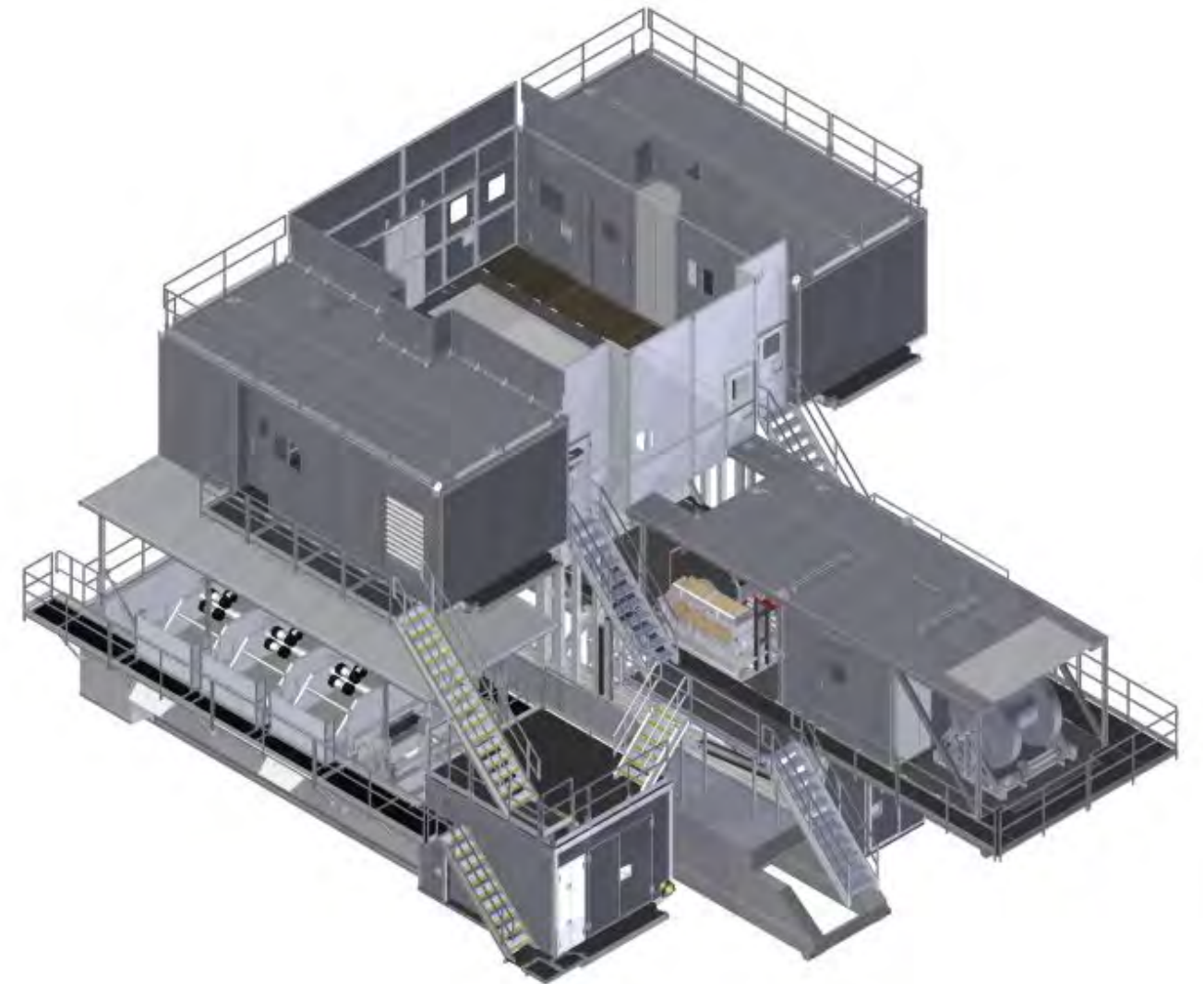
Products shown are just a sample of Ja-Co's capabilities. Ja-Co is not limited to what is shown.

COMPLETE CENTER SECTIONS

Fully dressed center sections complete with masts, substructures, pontoons, walking systems, drawworks, hanging buildings, tanks, walkways, staircases, prefabs, windwalls, walking wheels, etc.

RETROFITS (Non-mongrammable)

Sub and Mast capacity upgrades, HP psi upgrades, walking sub integration, hanging building integration, pontoon additions etc.



FLANGES AND API 6A – PSL 1, 2, & 3

Products shown are just a sample of Ja-Co's capabilities. Ja-Co is not limited to what is shown.

FLANGES & HUBS (LOOSE CONNECTORS)

See Flange dimension chart on pages 21-22

SIZES	PRESSURE RATING		MANUFACTURED FROM	
Full Range of API 6A tables Monogrammable products indicated below	2,000 psi through 20,000 psi		AISI 4130 75K NACE MR0175 compliant material	
	BLIND FLANGES API 6A			TARGET FLANGES API 6A
	THREADED COMPANION FLANGES			WELD NECK SWIVEL FLANGES
	WELD NECK FLANGES			STUDED CROSS API 6A
	STUDED CROSS WITH FLANGE API 6A			DOUBLE FLANGED ADAPTOR API 6A
	DOUBLE STUDED ADAPTOR API 6A			



MISCELLANEOUS LOOSE CONNECTORS

HUB STYLES		Blind, Target, Threaded, Weld Neck	
	BLIND HUB		FLANGE X UNION ADAPTOR Male and Female style 'Hammer Union Ends' integral with Flange ends
	WELD NECK HUB		

PIPE FITTINGS

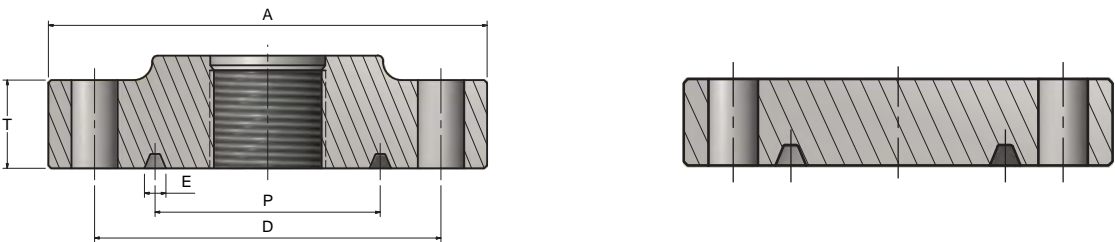
Products shown are just a sample of Ja-Co's capabilities. Ja-Co is not limited to what is shown.

HIGH PRESSURE WELD NECK PIPE FITTINGS

PRESSURE RATING	XXH AVAILABLE SIZES		Manufactured from AISI 4130 75K NACE MR0175 compliant material	
10,000 psi	2", 3", 4", 5" (OD / ID dimensions compliant with ASME 36.10)			
FITTING TYPES	Overall dimensions and butt welding end preps compliant with ASME B16.9 & B16.25			
Elbows (45° & 90° (long radius & short radius)), Tee's, Crosses, Concentric Reducers, End Caps and Weld-O-Lets				
	90° ELBOW			45° ELBOW
	CROSS			CONCENTRIC REDUCER
	STRAIGHT TEE			END CAP
	WELD-O-LET			CUSTOM FITTINGS

FLANGE & BOLT DIMENSIONS

Products shown are just a sample of Ja-Co's capabilities. Ja-Co is not limited to what is shown.



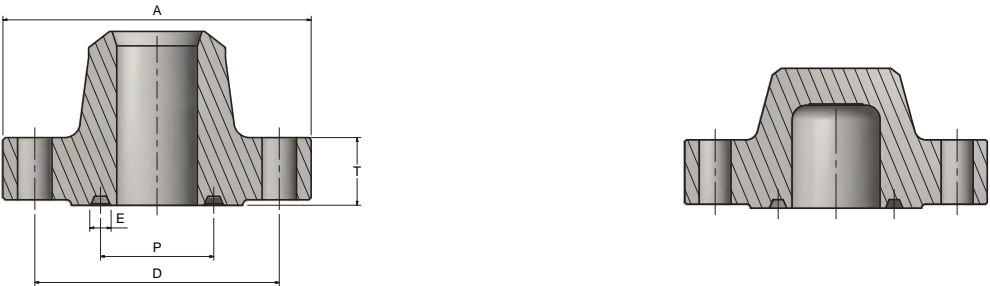
Threaded Flange

Blind Flange

API PRESSURE RATING	FLANGE DIMENSIONS						RING GROOVE					BOLT STUDS					
	NOMINAL SIZE		OUTSIDE DIAMETER OF FLANGE		THICKNESS OF FLANGE		PITCH DIAMETER		GROOVE WIDTH		RING NO	BOLT CIRCLE DIAMETER		NO. OF BOLTS	BOLT SIZE	STUD LENGTH	
	in	mm	in	mm	in	mm	in	mm	in	mm		in	mm		in	in	mm
2000 PSI 13.8 MPa (R or RX Gasket)	2 1/16	52.4	6.50	165.1	1.41	35.81	3.25	82.6	0.469	11.91	R/RX 23	5.00	127.0	8	5/8	4.50	114.3
	2 9/16	65.1	7.50	190.5	1.54	39.12	4.00	101.6	0.469	11.91	R/RX 26	5.88	149.4	8	3/4	5.00	127.0
	3 1/8	79.4	8.25	209.6	1.66	42.16	4.88	123.8	0.469	11.91	R/RX 31	6.62	168.1	8	3/4	5.25	133.4
	4 1/16	103.2	10.75	273.1	1.91	48.51	5.88	149.2	0.469	11.91	R/RX 37	8.50	215.9	8	7/8	6.00	152.4
	5 1/8	130.2	13.00	330.2	2.16	54.86	7.13	181.0	0.469	11.91	R/RX 41	10.50	266.7	8	1	6.75	171.5
	7 1/16	179.4	14.00	355.6	2.29	58.17	8.31	211.2	0.469	11.91	R/RX 45	11.50	292.1	12	1	7.00	177.8
	9	228.6	16.50	419.1	2.60	66.04	10.63	269.9	0.469	11.91	R/RX 49	13.75	349.3	12	1 1/8	8.00	203.2
	11	279.4	20.00	508.0	2.91	73.91	12.75	323.9	0.469	11.91	R/RX 53	17.00	431.8	16	1 1/4	8.75	222.3
	13 5/8	346.1	22.00	558.8	3.04	77.22	15.00	381.0	0.469	11.91	R/RX 57	19.25	489.0	20	1 1/4	9.00	228.6
	16 3/4	425.5	27.00	685.8	3.41	86.61	18.50	469.9	0.469	11.91	R/RX 65	23.75	603.3	20	1 1/2	10.25	260.4
21 1/4	539.8	32.00	812.8	3.98	101.09	23.00	584.2	0.531	13.49	R/RX 73	28.50	723.9	24	1 5/8	11.75	298.5	
3000 PSI 20.7 MPa (R or RX Gasket)	2 1/16	52.4	8.50	215.9	1.91	48.51	3.75	95.3	0.469	11.91	R/RX 24	6.50	165.1	8	7/8	6.00	152.4
	2 9/16	65.1	9.62	244.3	2.04	51.82	4.25	108.0	0.469	11.91	R/RX 27	7.50	190.5	8	1	6.50	165.1
	3 1/8	79.4	9.50	241.3	1.91	48.51	4.88	123.8	0.469	11.91	R/RX 31	7.50	190.5	8	7/8	6.00	152.4
	4 1/16	103.2	11.50	292.1	2.16	54.86	5.88	149.2	0.469	11.91	R/RX 37	9.25	235.0	8	1 1/8	7.00	177.8
	5 1/8	130.2	13.75	349.3	2.41	61.21	7.13	181.0	0.469	11.91	R/RX 41	11.00	279.4	8	1 1/4	7.75	196.9
	7 1/16	179.4	15.00	381.0	2.60	66.04	8.31	211.2	0.469	11.91	R/RX 45	12.50	317.5	12	1 1/8	8.00	203.2
	9	228.6	18.50	469.9	2.91	73.91	10.63	269.9	0.469	11.91	R/RX 49	15.50	393.7	12	1 3/8	9.00	228.6
	11	279.4	21.50	546.1	3.16	80.26	12.75	323.9	0.469	11.91	R/RX 53	18.50	469.9	16	1 3/8	9.50	241.3
	13 5/8	346.1	24.00	609.6	3.54	89.92	15.00	381.0	0.469	11.91	R/RX 57	21.00	533.4	20	1 3/8	10.25	260.4
	16 3/4	425.5	27.75	704.9	4.04	102.62	18.50	469.9	0.656	16.66	R/RX 66	24.25	616.0	20	1 5/8	11.75	298.5
20 3/4	527.1	33.75	857.3	4.85	123.19	23.00	584.2	0.781	19.84	R/RX 74	29.50	749.3	20	2	14.50	368.3	
5000 PSI 34.5 MPa (R or RX Gasket)	2 1/16	52.4	8.50	215.9	1.91	48.51	3.75	95.3	0.469	11.91	R/RX 24	6.50	165.1	8	7/8	6.00	152.4
	2 9/16	65.1	9.62	244.3	2.04	51.82	4.25	108.0	0.469	11.91	R/RX 27	7.50	190.5	8	1	6.50	165.1
	3 1/8	79.4	10.50	266.7	2.29	58.17	5.38	136.5	0.469	11.91	R/RX 35	8.00	203.2	8	1 1/8	7.25	184.2
	4 1/16	103.2	12.25	311.2	2.54	64.52	6.38	161.9	0.469	11.91	R/RX 39	9.50	241.3	8	1 1/4	8.00	203.2
	5 1/8	130.2	14.75	374.7	3.29	83.57	7.62	193.7	0.469	11.91	R/RX 44	11.50	292.1	8	1 1/2	10.00	254.0
	7 1/16	179.4	15.50	393.7	3.72	94.49	8.31	211.2	0.531	13.49	R/RX 46	12.50	317.5	12	1 3/8	10.75	273.1
	9	228.6	19.00	482.6	4.16	105.66	10.63	269.9	0.656	16.66	R/RX 50	15.50	393.7	12	1 5/8	12.00	304.8
	11	279.4	23.00	584.2	4.79	121.67	12.75	323.9	0.656	16.66	R/RX 54	19.00	482.6	12	1 7/8	13.75	349.3

FLANGE & BOLT DIMENSIONS

Products shown are just a sample of Ja-Co's capabilities. Ja-Co is not limited to what is shown.



Weldneck Flanges

Target Flange

API PRESSURE RATING	FLANGE DIMENSIONS						RING GROOVE					BOLT STUDS						
	NOMINAL SIZE		OUTSIDE DIAMETER OF FLANGE		THICKNESS OF FLANGE		PITCH DIAMETER		GROOVE WIDTH		RING NO	BOLT CIRCLE DIAMETER		NO. OF BOLTS	BOLT SIZE	STUD LENGTH		
	in	mm	in	mm	in	mm	in	mm	in	mm		in	mm		in	in	mm	
5000 PSI 34.5 Mpa (R or RX Gasket)	13 5/8	346.1	26.50	673.1	4.54	115.32	15.28	388.0	0.786	19.96	BX-160	23.25	590.6	16	1 5/8	12.50	317.5	
	16 3/4	425.5	30.38	771.7	5.22	132.59	18.13	460.4	0.705	17.91	BX-162	26.62	676.1	16	1 7/8	14.50	368.3	
	18 3/4	476.3	35.62	904.7	6.63	168.40	21.18	537.9	1.006	25.55	BX-163	31.62	803.1	20	2	17.50	444.5	
	21 1/4	539.8	39.00	990.6	7.12	180.85	23.83	605.4	1.071	27.20	BX-165	34.88	886.0	24	2	18.75	476.3	
10,000 PSI 69.0 Mpa (R or RX Gasket)	1 13/16	46.0	7.38	187.5	1.76	44.70	2.60	65.9	0.466	11.84	BX-151	5.75	146.1	8	3/4	5.00	127.0	
	2 1/16	52.4	7.88	200.2	1.83	46.48	2.90	73.6	0.498	12.65	BX-152	6.25	158.8	8	3/4	5.25	133.4	
	2 9/16	65.1	9.12	231.6	2.12	53.85	3.49	88.7	0.554	14.07	BX-153	7.25	184.2	8	7/8	6.00	152.4	
	3 1/16	77.8	10.62	269.7	2.40	60.96	4.08	103.6	0.606	15.39	BX-154	8.50	215.9	8	1	6.75	171.5	
	4 1/16	103.2	12.44	316.0	2.87	72.90	5.23	132.9	0.698	17.73	BX-155	10.19	258.8	8	1 1/8	8.00	203.2	
	5 1/8	130.2	14.06	357.1	3.23	82.04	6.29	159.7	0.666	16.92	BX-169	11.81	300.0	12	1 1/8	8.75	222.3	
	7 1/16	179.4	18.88	479.6	4.16	105.66	8.60	218.4	0.921	23.39	BX-156	15.88	403.4	12	1 1/2	11.25	285.8	
	9	228.6	21.75	552.5	4.98	126.49	10.74	272.7	1.039	26.39	BX-157	18.75	476.3	16	1 1/2	13.00	330.2	
	11	279.4	25.75	654.1	5.66	143.76	12.92	328.0	1.149	29.18	BX-158	22.25	565.2	16	1 3/4	15.00	381.0	
	13 5/8	346.1	30.25	768.4	6.72	170.69	15.75	400.2	1.279	32.49	BX-159	26.50	673.1	20	1 7/8	17.25	438.2	
	16 3/4	425.5	34.31	871.5	6.72	170.69	18.13	460.4	0.705	17.91	BX-162	30.56	776.2	24	1 7/8	17.50	444.5	
	18 3/4	476.3	45.00	1143.0	8.88	225.55	22.75	577.9	0.720	18.29	BX-164	36.44	925.6	24	2 1/4	22.50	571.5	
	21 1/4	539.8	45.00	1143.0	9.60	243.84	25.51	647.9	1.373	34.87	BX-166	40.25	1022.4	24	2 1/2	24.50	622.3	
15,000 PSI 103.5 Mpa (R or RX Gasket)	1 13/16	46.0	8.19	208.0	1.88	47.75	3.06	77.8	0.466	11.84	BX-151	6.31	160.3	8	7/8	5.50	139.7	
	2 1/16	52.4	8.75	222.3	2.10	53.34	3.40	86.2	0.498	12.65	BX-152	6.88	174.8	8	7/8	6.00	152.4	
	2 9/16	65.1	10.00	254.0	2.35	59.69	4.05	102.8	0.554	14.07	BX-153	7.88	200.2	8	1	6.75	171.5	
	3 1/16	77.8	11.31	287.3	2.63	66.80	4.69	119.0	0.606	15.39	BX-154	9.06	230.1	8	1 1/8	7.50	190.5	
	4 1/16	103.2	14.19	360.4	3.19	81.03	5.93	150.6	0.698	17.73	BX-155	11.44	290.6	8	1 3/8	9.25	235.0	
	5 1/8	130.2	16.50	419.1	3.98	101.09	6.96	176.7	0.666	16.92	BX-169	13.50	342.9	12	1 1/2	11.50	292.1	
	7 1/16	179.4	19.88	505.0	4.79	121.67	9.52	241.8	0.921	23.39	BX-156	16.88	428.8	16	1 1/2	12.75	323.9	
	9	228.6	25.50	647.7	5.85	148.59	11.77	299.1	1.039	26.39	BX-157	21.75	552.5	16	1 7/8	15.75	400.1	
	11	279.4	32.00	812.8	7.39	187.71	14.06	357.2	1.149	29.18	BX-158	28.00	711.2	20	2	19.25	489.0	
	13 5/8	346.1	34.88	886.0	8.16	207.26	17.03	432.6	1.279	32.49	BX-159	30.38	771.7	20	2 1/4	21.25	539.8	
	18 3/4	476.3	45.75	1162.1	10.16	258.06	22.75	577.9	0.720	18.29	BX-164	40.00	1016.0	20	3	26.75	679.5	
	20000 PSI 138.0 Mpa (R or RX Gasket)	1 13/16	46.0	10.12	257.0	2.60	66.04	3.06	77.8	0.466	11.84	BX-151	8.00	203.2	8	1	7.50	190.5
		2 1/16	52.4	11.31	287.3	2.81	71.37	3.40	86.2	0.498	12.65	BX-152	9.06	230.1	8	1 1/8	8.25	209.6
2 9/16		65.1	12.81	325.4	3.22	81.79	4.05	102.8	0.554	14.07	BX-153	10.31	261.9	8	1 1/4	9.25	235.0	
3 1/16		77.8	14.06	357.1	3.48	88.39	4.69	119.0	0.606	15.39	BX-154	11.31	287.3	8	1 3/8	10.00	254.0	
4 1/16		103.2	17.56	446.0	4.29	108.97	5.93	150.6	0.698	17.73	BX-155	14.06	357.1	8	1 3/4	12.25	311.2	
7 1/16		179.4	25.81	655.6	6.60	167.64	9.52	241.8	0.921	23.39	BX-156	21.81	554.0	16	2	17.50	444.5	
9		228.6	31.69	804.9	8.16	207.26	11.77	299.1	1.039	26.39	BX-157	27.00	685.8	16	2 1/2	22.38	568.3	
11		279.4	34.75	882.7	8.91	226.31	14.06	357.2	1.149	29.18	BX-158	29.50	749.3	16	2 3/4	23.75	603.3	
13 5/8		346.1	45.75	1162.1	11.60	294.64	17.03	432.6	1.279	32.49	BX-159	40.00	1016.0	20	3	30.00	762.0	

API 8C – PSL 1


Products shown are just a sample of Ja-Co's capabilities. Ja-Co is not limited to what is shown.

MONOGRAMMED SHEAVES


See Sheaves dimension chart on pages 25-26

SIZES Standard sheaves up to 72" in diameter Full range of wire rope sizes available from 9/16" to 1 3/4"	MATERIAL Flame hardened groove to 35 HRC for improved wear and fatigue 210 degrees of hardened groove Sheaves available as part of full assembly
--	--


SHEAVE ASSEMBLIES




INDIVIDUAL SHEAVE



CROWN CLUSTER ASSEMBLY



FAST LINE SHEAVE



DEADLINE SHEAVE



DEADLINE ANCHORS

SIZES
35, 60, 75, 87.5, and 100 kip anchors

STYLE
Mast and floor mount styles available

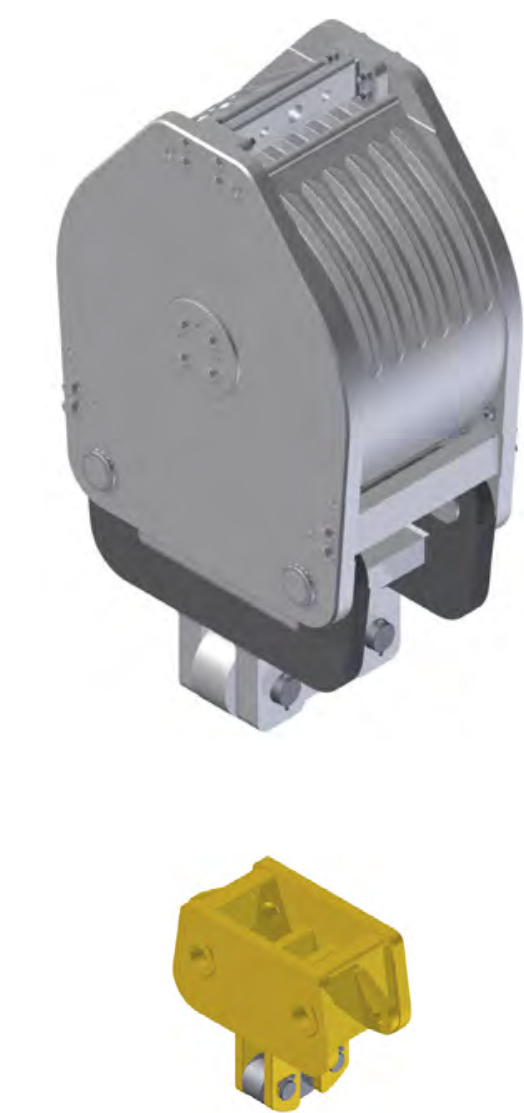
ACCURACY
Highly accurate and reliable
Easily adapted to fit a wide variety of load cells

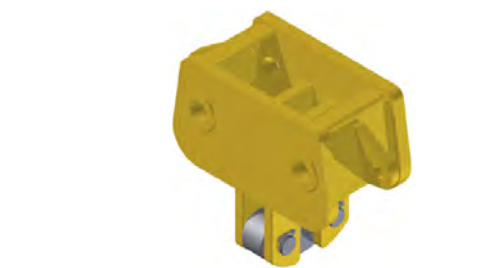
API 8C – PSL 1

Products shown are just a sample of Ja-Co's capabilities. Ja-Co is not limited to what is shown.

TRAVELLING BLOCKS

SIZES 250, 350, 400, 450, 500, and 700 short tons
STYLE Custom designs available upon request
MATERIAL Increased life with individual sheave lubrication lines





BLOCK TO HOOK ADAPTOR

SIZES
Custom sized to fit a wide range of travelling blocks and top drive models

STYLE
Easily removable pinned becket design

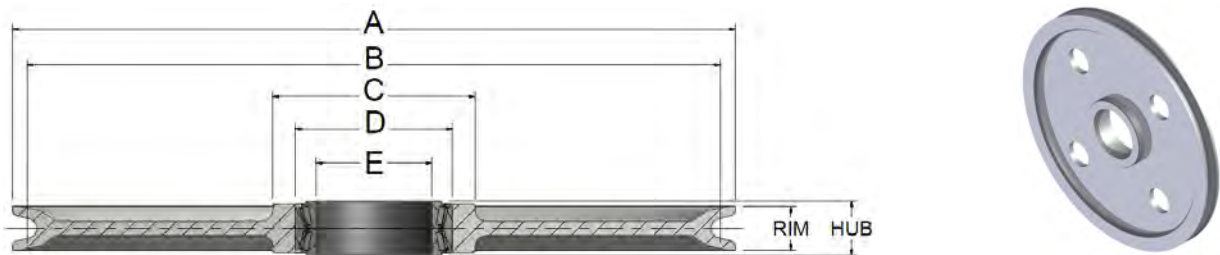
GUIDE DOLLIES

SIZES
Custom sized to hold a wide range of top drive models

STYLE
Both stationary and extend feature available

DESIGN
Heavy duty construction and built to resist large amounts of torque

API 8C – PSL 1



"A" NOMINAL OUTSIDE DIAMETER (IN)	WIRE ROPE DIAMETER (IN)	BORE INFORMATION			"C" NOMINAL HUB OUTSIDE DIAMETER (IN)	"HUB" HUB WIDTH (IN)	"RIM" RIM WIDTH (IN)	"B" TREAD DIAMETER (IN)	APPROXIMATE WEIGHT (LBS)
		"D" BORE SIZE (IN)	BEARING INFO. (BEARING NOT INCLUDED)						
			"E" SHAFT/PIN SIZE (IN)	BEARING DESCRIPTION					
24" Sheave									
24	7/8	6.500	4.250	NA56425SW / 56650CD	8.50	3.375	3.00	21.67	139
24	15/16	6.500	4.250	NA56425SW / 56650CD	8.50	3.375	3.00	21.51	137
24	1	6.500	4.250	NA56425SW / 56650CD	8.50	3.375	3.00	21.34	135
24	1-1/8	6.500	4.250	NA56425SW / 56650CD	8.50	3.375	3.00	21.01	131
30" Sheave									
30	1	6.500	4.250	NA56425SW / 56650CD	8.50	3.375	3.00	27.34	294
30	1-1/8	6.500	4.250	NA56425SW / 56650CD	8.50	3.375	3.00	27.01	284
30	1-1/8	8.875	6.500	NA46790SW / 46720CD	11.80	3.625	3.00	27.01	295
35" Sheave									
35	1-1/8	8.875	6.500	NA46790SW / 46720CD	11.80	3.625	3.00	32.01	377
36" Sheave									
36	1-1/8	8.875	6.500	NA46790SW / 46720CD	11.80	3.625	3.00	33.01	396
36	1-1/8	10.875	8.000	LM241149NW / LM241110D	13.80	3.625	3.00	33.01	394
36	1 1/4	8.875	6.500	NA46790SW / 46720CD	11.80	3.625	3.00	32.68	382
36	1-1/4	10.875	8.000	LM241149NW / LM241110D	13.80	3.625	3.00	32.68	380
36	1-3/8	10.875	8.000	LM241149NW / LM241110D	13.80	3.625	3.00	32.34	366
36	1-1/2	10.875	8.000	LM241149NW / LM241110D	13.80	3.625	3.500	32.01	393
40" Sheave									
40	1-1/4	8.875	6.500	NA46790SW / 46720CD	11.80	3.625	3.00	36.68	462
40	1-1/4	10.875	8.000	LM241149NW / LM241110D	13.80	3.625	3.00	36.68	460
42" Sheave									
42	1-1/8	8.875	6.500	NA46790SW / 46720CD	11.80	3.625	3.00	39.01	521
42	1-1/8	10.875	8.000	LM241149NW / LM241110D	13.80	3.625	3.00	39.01	519
42	1-1/4	8.875	6.500	NA46790SW / 46720CD	11.80	3.625	3.00	38.68	504
42	1-1/4	10.875	8.000	LM241149NW / LM241110D	13.80	3.625	3.00	38.68	502
42	1-1/4	13.688	10.000	LM249747NW / LM249710CD	17.80	3.875	3.00	38.68	528
42	1-3/8	10.875	8.000	LM241149NW / LM241110D	13.80	3.625	3.00	38.34	485
42	1-3/8	13.688	10.000	LM249747NW / LM249710CD	17.80	3.875	3.00	38.34	511
42	1-1/2	10.875	8.000	LM241149NW / LM241110D	13.80	3.625	3.500	38.01	517
42	1-1/2	13.688	10.000	LM249747NW / LM249710CD	17.80	3.875	3.500	38.01	543
45" Sheave									
45	1-3/8	10.875	8.000	LM241149NW / LM241110D	13.80	3.625	3.00	41.34	551

API 8C – PSL 1

"A" NOMINAL OUTSIDE DIAMETER (IN)	WIRE ROPE DIAMETER (IN)	BORE INFORMATION			"C" NOMINAL HUB OUTSIDE DIAMETER (IN)	"HUB" HUB WIDTH (IN)	"RIM" RIM WIDTH (IN)	"B" TREAD DIAMETER (IN)	APPROXIMATE WEIGHT (LBS)
		"D" BORE SIZE (IN)	BEARING INFO. (BEARING NOT INCLUDED)						
			"E" SHAFT/PIN SIZE (IN)	BEARING DESCRIPTION					
48" Sheave									
48	1-1/4	10.875	8.000	LM241149NW / LM241110D	13.80	3.625	3.00	44.68	640
48	1-1/4	13.688	10.000	LM249747NW / LM249710CD	17.80	3.875	3.00	44.68	666
48	1-3/8	10.875	8.000	LM241149NW / LM241110D	13.80	3.625	3.00	44.34	621
48	1-3/8	13.688	10.000	LM249747NW / LM249710CD	17.80	3.875	3.00	44.34	646
48	1-1/2	10.875	8.000	LM241149NW / LM241110D	13.80	3.625	3.500	44.01	657
48	1-1/2	13.688	10.000	LM249747NW / LM249710CD	17.80	3.875	3.500	44.01	683
50" Sheave									
50	1-3/8	10.875	8.000	LM241149NW / LM241110D	13.80	3.625	3.00	46.34	700
50	1-3/8	13.688	10.000	LM249747NW / LM249710CD	17.80	3.875	3.00	46.34	725
50	1-3/8	13.875	10.500	LM251649NW / LM251610D	18.00	4.125	3.00	46.34	730
50	1-1/2	13.688	10.000	LM249747NW / LM249710CD	17.80	3.875	3.500	46.01	773
50	1-1/2	13.875	10.500	LM251649NW / LM251610D	18.00	4.125	3.500	46.01	778
50	1-3/4	13.688	10.000	LM249747NW / LM249710CD	17.80	3.875	3.750	45.35	758
50	1-3/4	15.500	12.000	L357049NW / L357010CD	19.75	4.125	3.750	45.35	767
52" Sheave									
52	1-1/4	10.875	8.000	LM241149NW / LM241110D	13.80	3.625	3.00	48.68	763
52	1-1/4	13.688	10.000	LM249747NW / LM249710CD	17.80	3.875	3.00	48.68	788
52	1-3/8	10.875	8.000	LM241149NW / LM241110D	13.80	3.625	3.00	48.34	741
52	1-3/8	13.688	10.000	LM249747NW / LM249710CD	17.80	3.875	3.00	48.34	767
52	1-3/8	13.875	10.500	LM251649NW / LM251610D	18.00	4.125	3.00	48.34	771
52	1-1/2	13.688	10.000	LM249747NW / LM249710CD	17.80	3.875	3.500	48.01	817
52	1-1/2	13.875	10.500	LM251649NW / LM251610D	18.00	4.125	3.500	48.01	821
52	1-3/4	13.688	10.000	LM249747NW / LM249710CD	17.80	3.875	3.750	47.35	801
52	1-3/4	15.500	12.000	L357049NW / L357010CD	19.75	4.125	3.750	47.35	810
56" Sheave									
56	1-1/8	8.875	6.500	NA46790SW / 46720CD	11.80	3.625	3.00	53.01	898
56	1-1/4	8.875	6.500	NA46790SW / 46720CD	11.80	3.625	3.00	52.68	876
56	1-1/4	10.875	8.000	LM241149NW / LM241110D	13.80	3.625	3.00	52.68	874
60" Sheave									
60	1-1/4	10.875	8.000	LM241149NW / LM241110D	13.80	3.625	3.00	56.68	1268
60	1-1/4	13.688	10.000	LM249747NW / LM249710CD	17.80	3.875	3.00	56.68	1280
60	1-3/8	10.875	8.000	LM241149NW / LM241110D	13.80	3.625	3.00	56.34	1244
60	1-3/8	13.688	10.000	LM249747NW / LM249710CD	17.80	3.875	3.00	56.34	1255
60	1-3/8	13.875	10.500	LM251649NW / LM251610D	18.00	4.125	3.00	56.34	1259
60	1-1/2	13.688	10.000	LM249747NW / LM249710CD	17.80	3.875	3.500	56.01	1314
60	1-1/2	13.875	10.500	LM251649NW / LM251610D	18.00	4.125	3.500	56.01	1318
60	1-3/4	13.688	10.000	LM249747NW / LM249710CD	17.80	3.875	3.750	55.35	1295
60	1-3/4	15.500	12.000	L357049NW / L357010CD	19.75	4.125	3.750	55.35	1296
72" Sheave									
72	1-3/8	13.688	10.000	LM249747NW / LM249710CD	17.80	3.875	3.00	68.34	1767
72	1-3/8	15.500	12.000	L357049NW / L357010CD	19.75	4.125	3.00	68.34	1769
72	1-1/2	13.688	10.000	LM249747NW / LM249710CD	17.80	3.875	3.500	68.01	1838
72	1-1/2	15.500	12.000	L357049NW / L357010CD	19.75	4.125	3.500	68.01	1840
72	1-3/4	13.688	10.000	LM249747NW / LM249710CD	17.80	3.875	3.750	67.35	1816
72	1-3/4	15.500	12.000	L357049NW / L357010CD	19.75	4.125	3.750	67.35	1817

API 16A

Products shown are just a sample of Ja-Co's capabilities. Ja-Co is not limited to what is shown.

ADAPTORS & SPOOLS

SIZES	ADAPTOR FLANGE/SPOOL STYLES	SPOOL STYLES
Full Range of API 6A tables (Pages 21-22)	Single Studded*	Drilling Spool (Diverter Spool)
	Double Studded	Spacer Spool
	Flanged*	Adaptor Spool*
	Combination Flanged*	
	Studded*	*Not shown
PRESSURE RATINGS 2,000 psi – 20,000 psi		
MATERIAL Manufactured from AISI 4130 75K NACE MR0175 compliant material		

SWIVEL
DRILL SPOOL



DOUBLE STUDDED
ADAPTOR



DRILL SPOOL
(DIVERTER
SPOOL)



SPACER SPOOL



TC-44 TANKS

Products shown are just a sample of Ja-Co's capabilities. Ja-Co is not limited to what is shown.

TC-44 FUEL TANKS

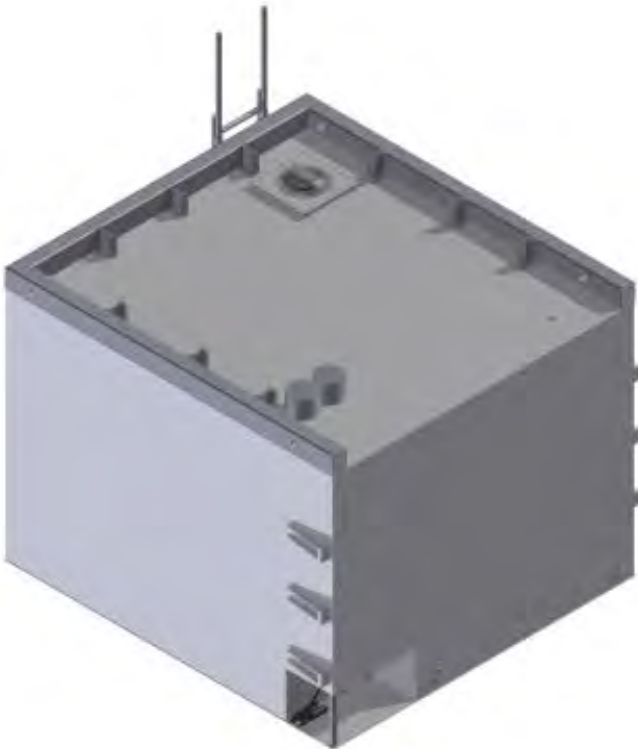
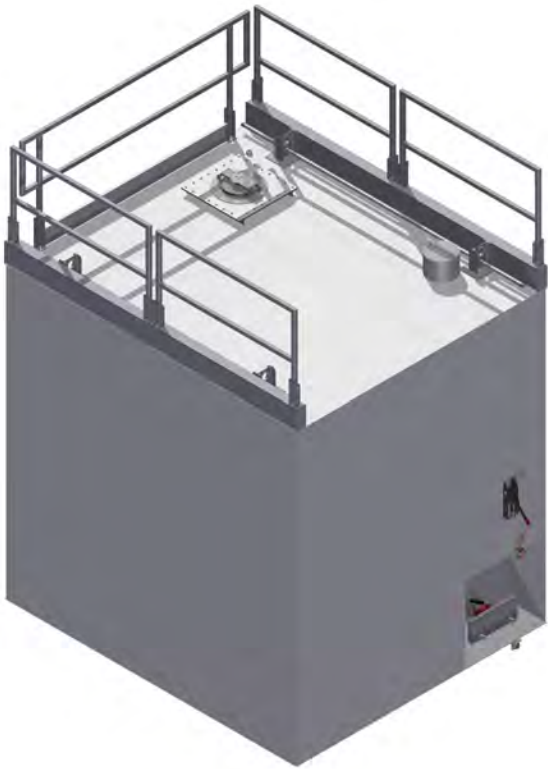
Our design includes, but is not limited to, a variety of options including hatchways, bolt down mounting, fuel gauges for fuel level readings, self-closing valve systems, fuel manifold, and roll over protection

Registered CSA B620 design engineer on staff

Ja-Co is also TC-44 registered for recertification

SIZES
Available to design and fabricate various tank sizes above 3,000 L

DESIGN
Non-inventory design (1 week turn around to get into fabrication)



WHEEL MOVING SYSTEM

Products shown are just a sample of Ja-Co's capabilities. Ja-Co is not limited to what is shown.



WHEEL SYSTEM

ENGINEERED CAPACITY

30,000 lb each pod

Higher capacities available upon request

DESIGN

360° bearing swivel for easy rotation

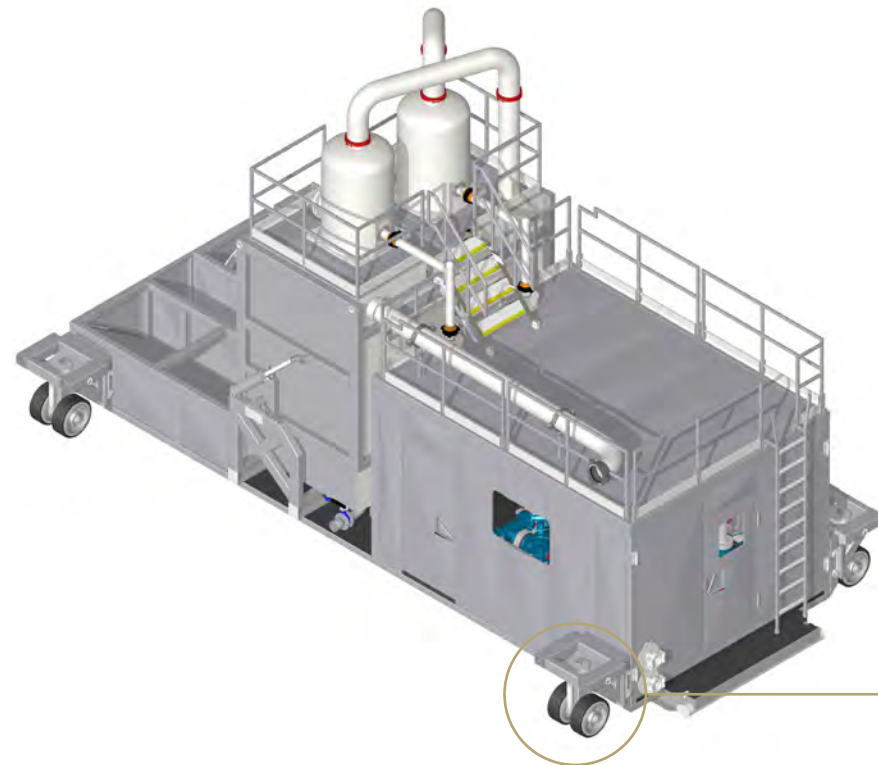
Uses quick latch framing complete with easy lock mechanical pinning

Designed to easily adapt to buildings tanks and structures

INCLUDES

16" diameter replaceable solid wheel with 21" high durometer rubber

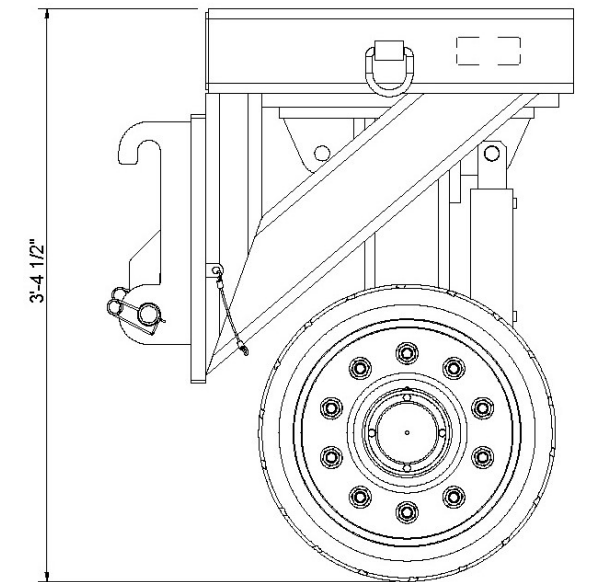
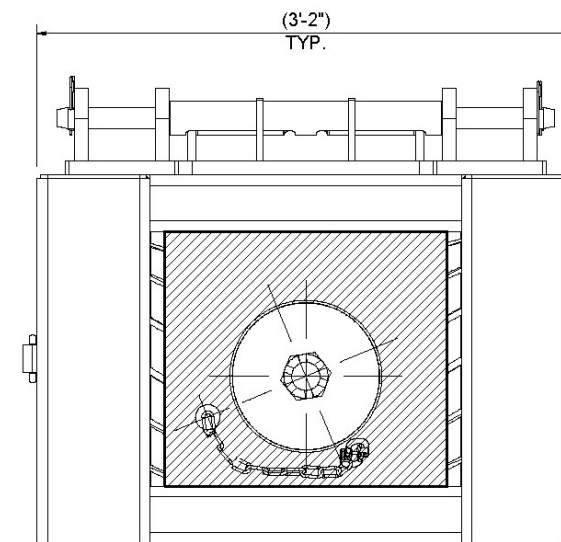
Rubber color, as requested (standard color: black)



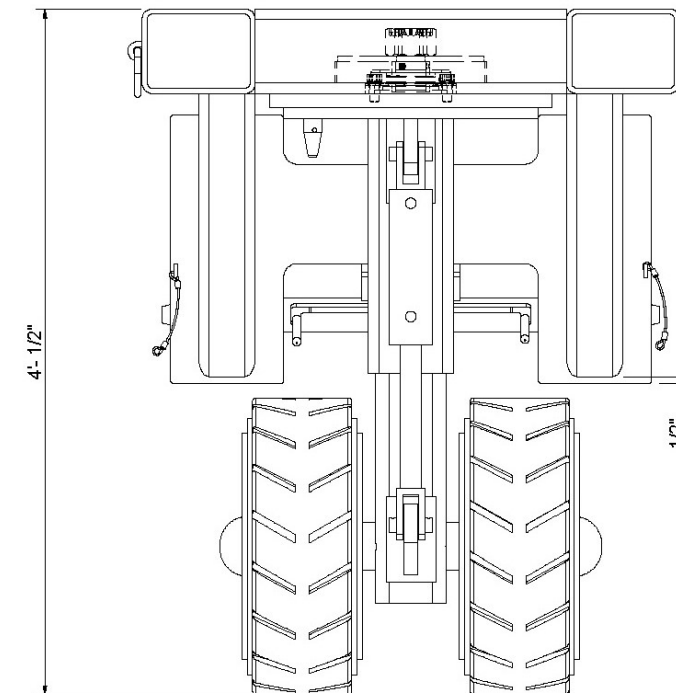
NOTE: 30" WHEEL POD ALSO AVAILABLE, SAME CAPACITIES CALL FOR DETAILS

WHEEL MOVING SYSTEM

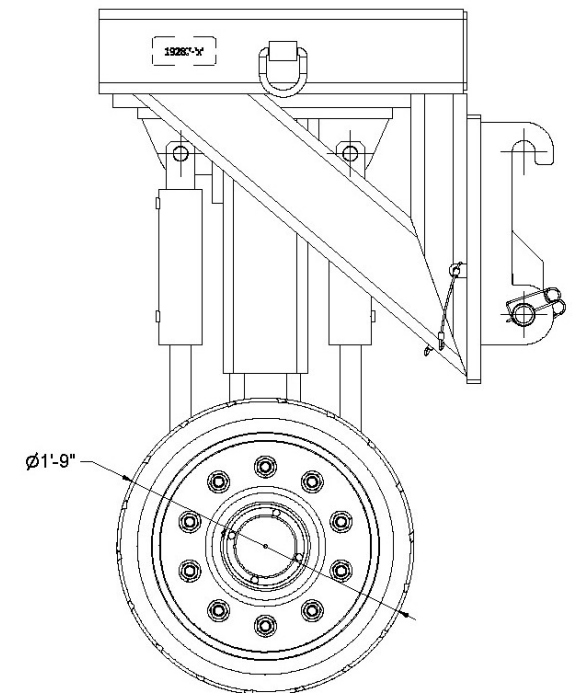
Products shown are just a sample of Ja-Co's capabilities. Ja-Co is not limited to what is shown.



GENERAL ASSEMBLY
ELEVATION VIEW
(CYLINDER RETRACTED)



GENERAL ASSEMBLY
LOCATION PLAN
(CYLINDER EXTENDED)



TRANSPORT SYSTEM

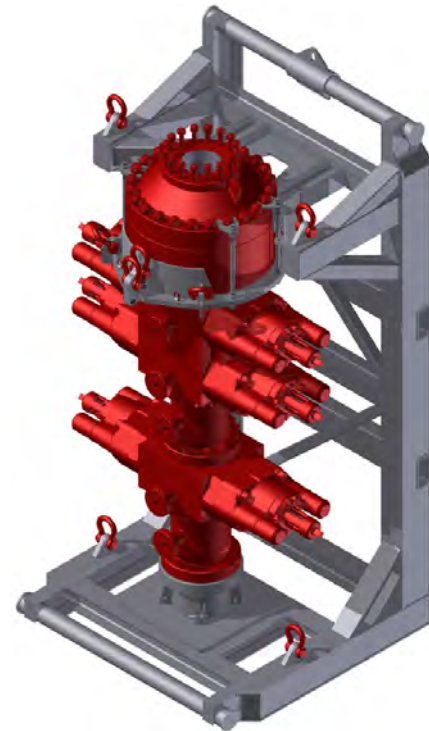
Products shown are just a sample of Ja-Co's capabilities. Ja-Co is not limited to what is shown.



B.O.P. LIFT PLATE

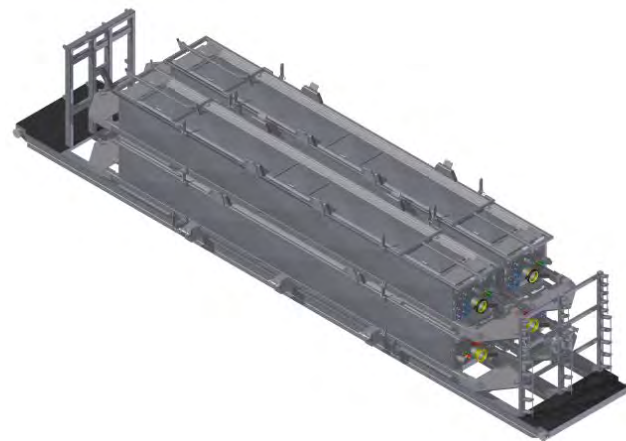


B.O.P. HANDLING CART

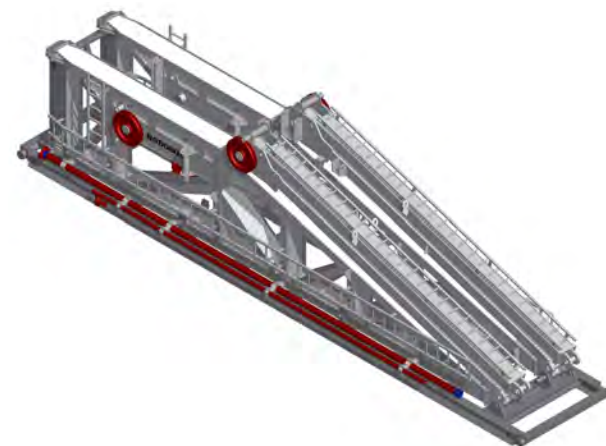


B.O.P. TRANSPORT CRADLE

Complete with test stump

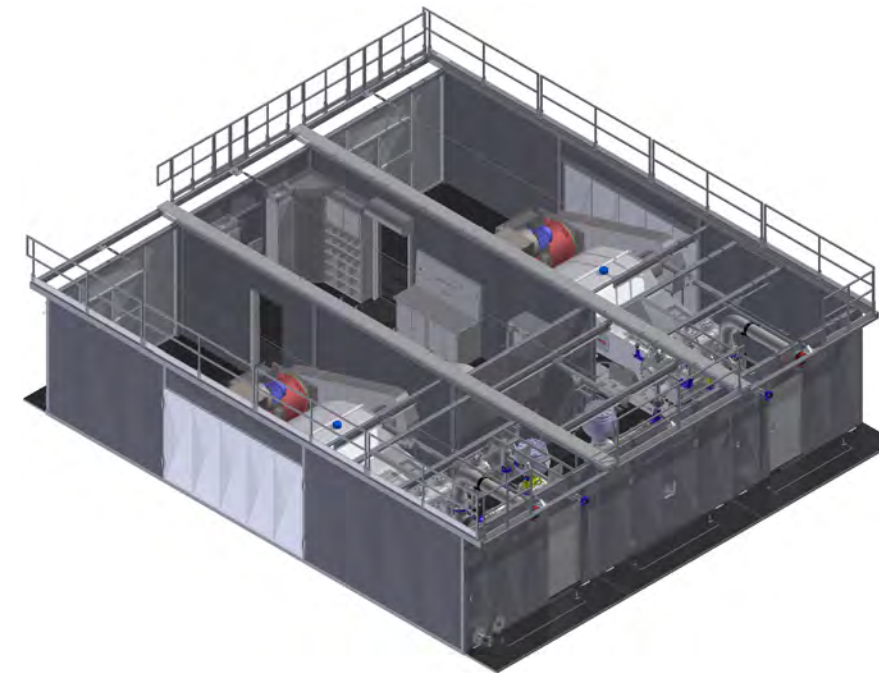


MISCELLANEOUS SHIPPING SKIDS



MUD SYSTEM

Products shown are just a sample of Ja-Co's capabilities. Ja-Co is not limited to what is shown.



PUMPS AND SPACERS

DESIGN

Designed and fabricated to suit customer requests and required equipment

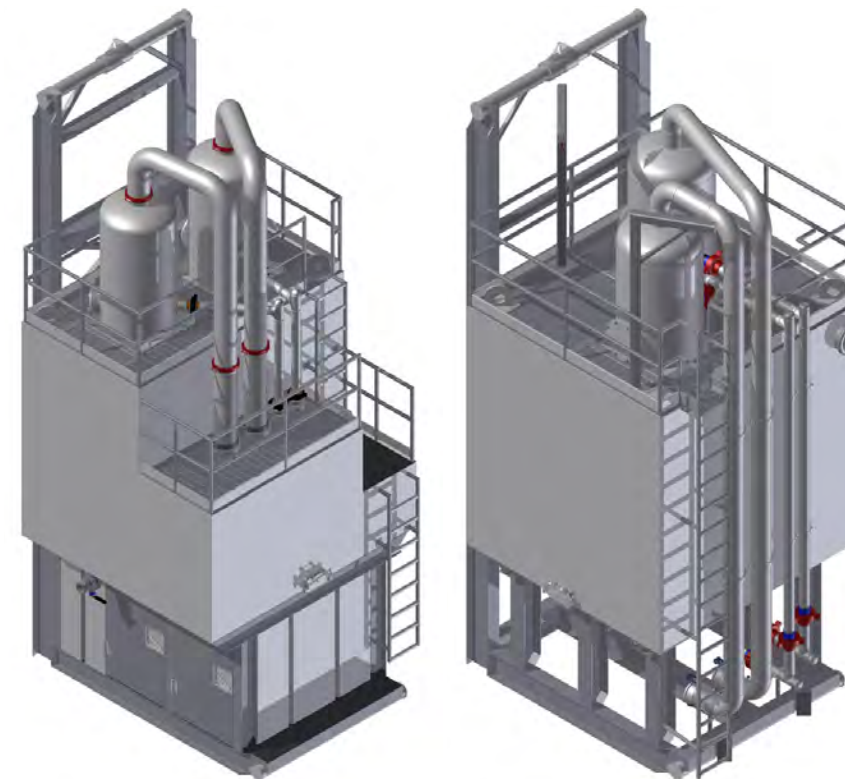
PIPING CAPABILITIES

20,000 psi, up to 6" nominal size

INCLUDES

Venting hatches, belt guards, catch trays, handrails, furniture, walkways, louvers etc.

Complex enclosures and hallways, if required



REMOTE DEGASSER

VOLUME CAPACITIES

Designed and fabricated to suit customer requests and required equipment

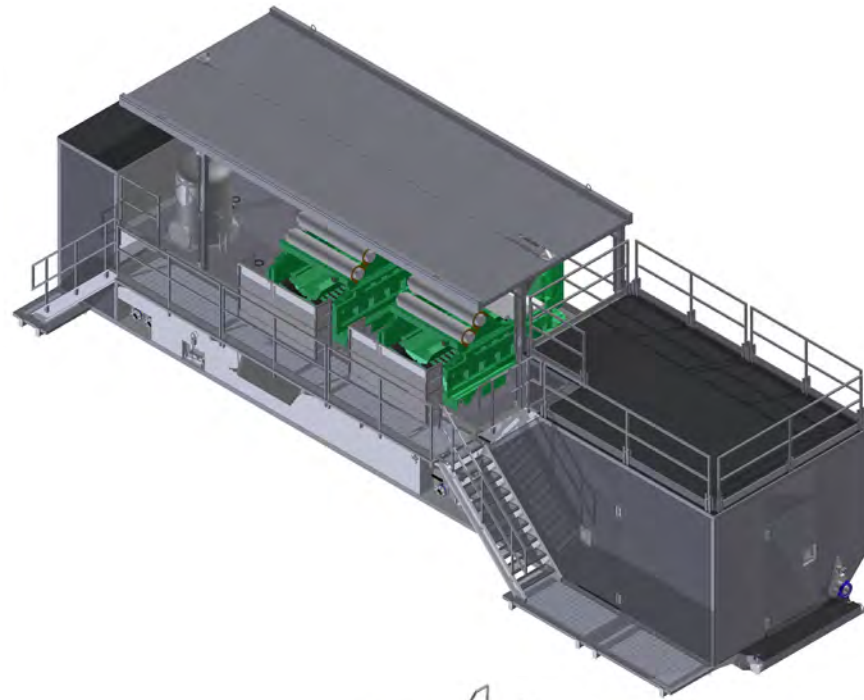
CUSTOM

Trip tank addition available upon request complete with trip pumps

Can also be combined with other loads (see Combination Units on page 35)

MUD SYSTEM

Products shown are just a sample of Ja-Co's capabilities. Ja-Co is not limited to what is shown.



TRANSFER/ SCALPING TANKS

DESIGN

Designed and fabricated to suit customer requests and required equipment

SIZE

Volumes as required

STYLES

Hanging Style

Swing Arm

Skidded Units

Collaboration with the engineering company to adapt to substructures and/or Moving Systems

CUSTOM

Degasser's available if required

Trip Tanks available if required

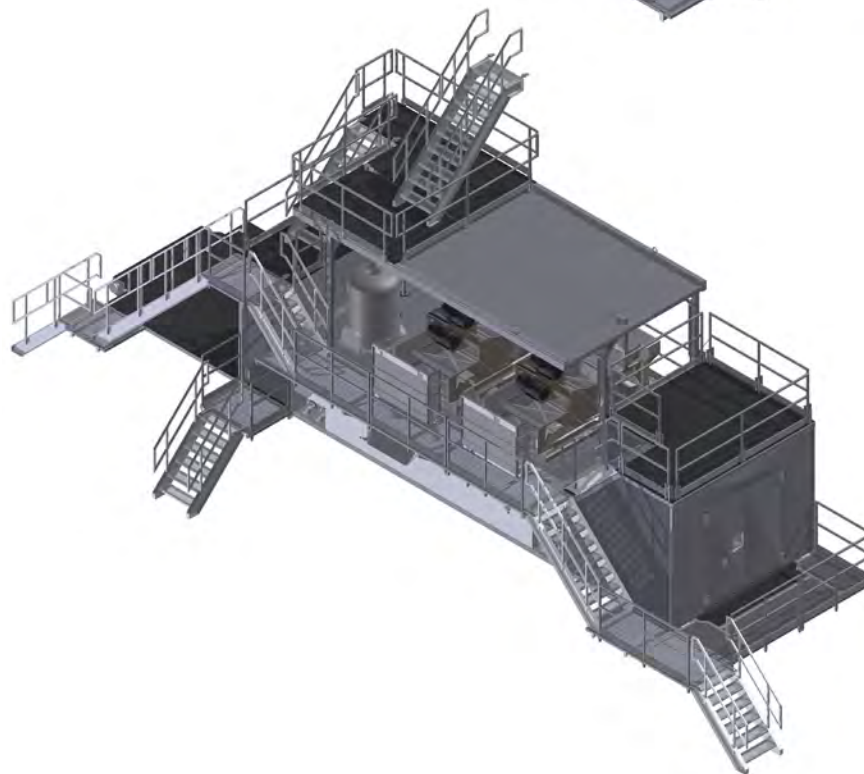
Pumps/motors and shakers by request

MATERIAL

Steel/aluminum roofs, steel/aluminum handrails

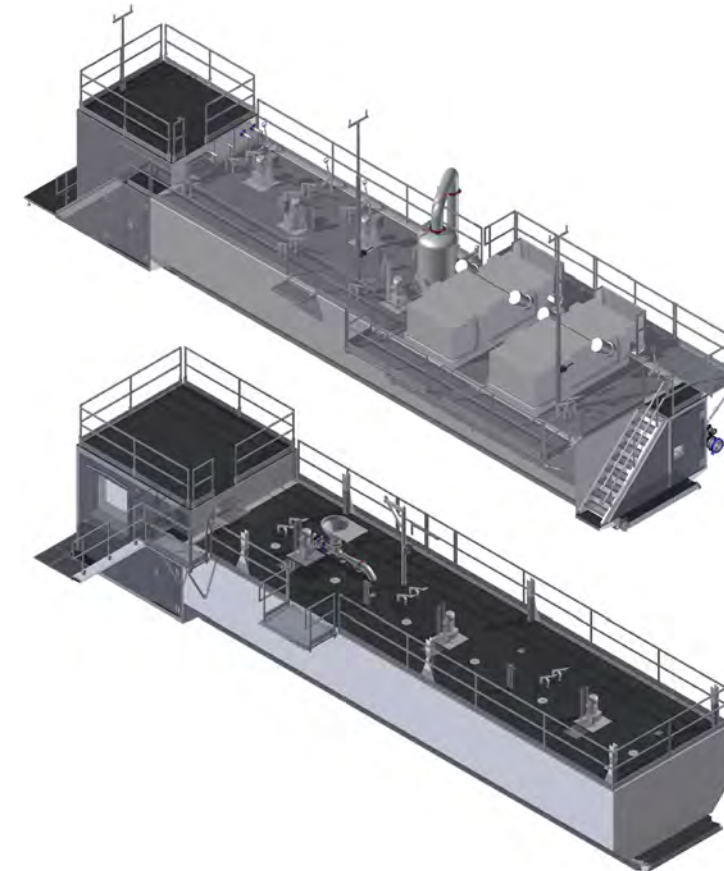
TANKS OPTIONS AND FITTINGS

Bridge Valves, Mud Guns, Mud Gates, Suck outs, Aluminum Retrieval Arms, sand traps etc. (See Components list starting on page 46 for fabricated parts)



MUD SYSTEM

Products shown are just a sample of Ja-Co's capabilities. Ja-Co is not limited to what is shown.



MUD TANKS

STYLES

Mixing tanks, premix tanks, and shaker tanks

SIZE

Volumes as required

MATERIAL

Steel/aluminum roofs, steel/aluminum handrails

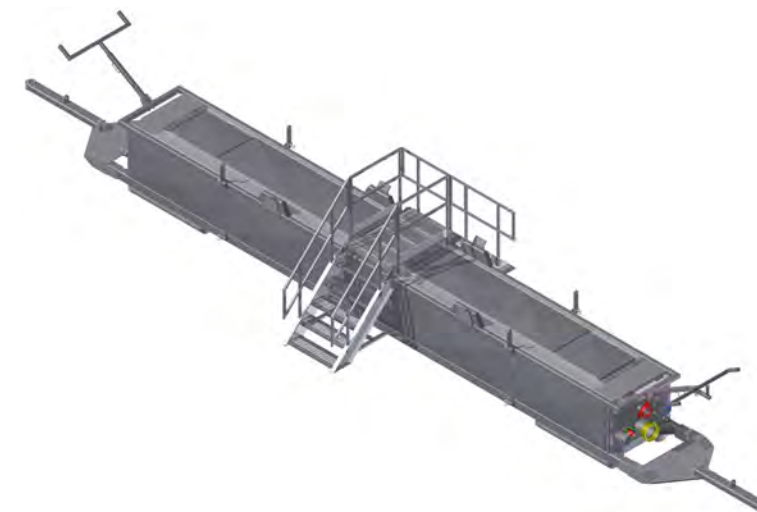
CUSTOM

Degasser's and trip tanks available if required

Pumps/motors and shakers by request

TANKS OPTIONS AND FITTINGS

Bridge Valves, Mud Guns, Mud Gates, Suck-outs, Aluminum Retrieval Arms, Sand Traps etc. (See Components list starting on page 46 for fabricated parts)



SUITCASES

PIPING CAPACITY

High pressure piping capacity up to 6" nominal pipe at 20,000 psi

MATERIAL

Cable troughs for electrical
Insulation if required

DESIGN

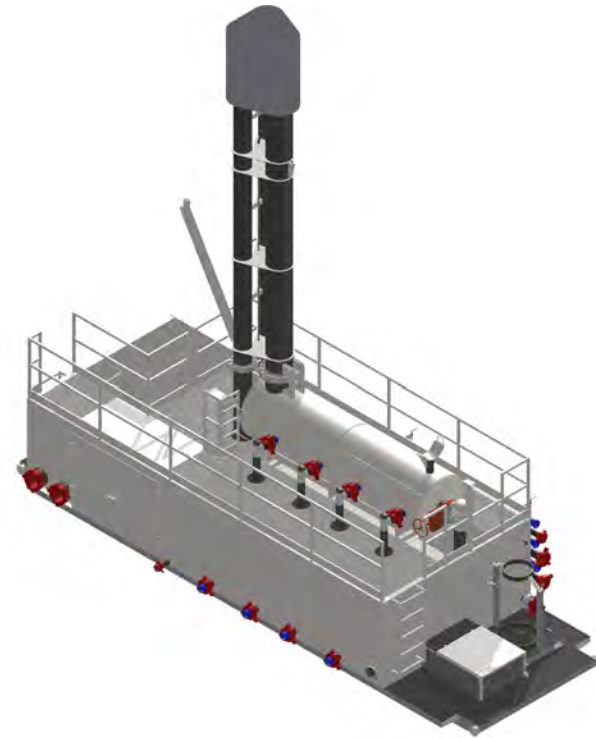
Suck out and blow out valves

Staircases, with HR's

Customization as required

MUD SYSTEM

Products shown are just a sample of Ja-Co's capabilities. Ja-Co is not limited to what is shown.



FLARE TANK GAS BUSTERS

15hp 575 v 3" Goran Rupp pump w/ class 1 div 2 motor

40" OD gasbuster, with optional quantity and diameters for flare stacks

SIZE

Typical shipping dimensions of 12'6" high, 10' wide and 31' long

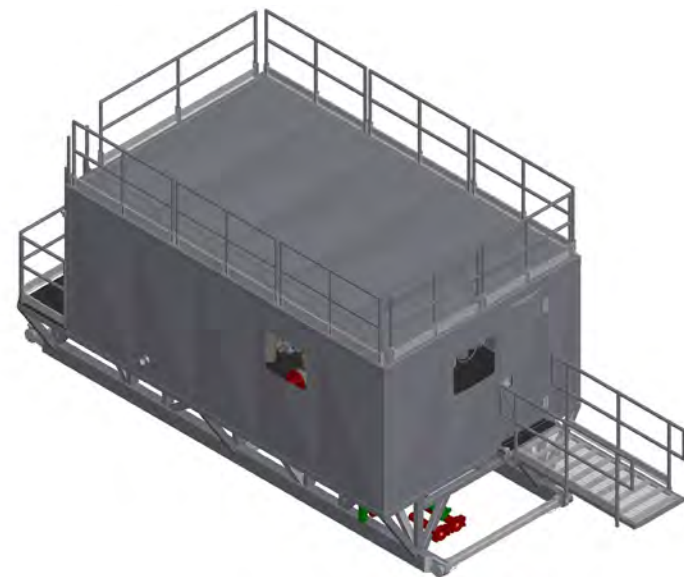
INCLUDES

100 lb propane bottle if required

Electrical winch for lifting stack

120 volt igniter assembly complete with control box/burner/gas manifold remote coil box, and power pole

Remote Degasser Flare Tank also available



CHOKE MANIFOLD BUILDINGS

CUSTOM

Optional wheel systems, well head clearance, furniture, etc.

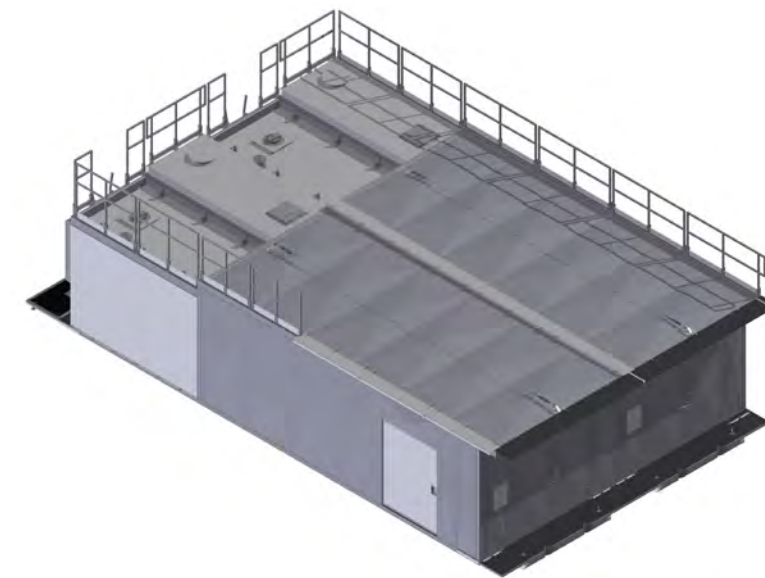
CAPACITY

Up to 20,000 psi systems

Smaller shipping loads can be combined with others, see our combination building list

SUPPORTING BUILDINGS

Products shown are just a sample of Ja-Co's capabilities. Ja-Co is not limited to what is shown.



BOILER BUILDINGS

Boiler(s) as requested by customer

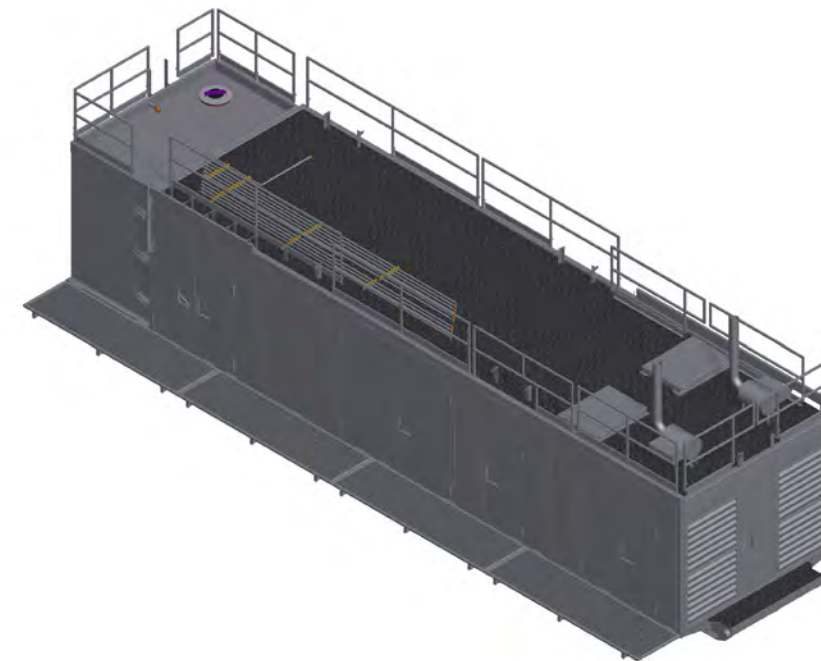
INCLUDES

Optional TC44 tank

Optional watertank with boiler blowdown

STYLE

Complex type buildings if requested



COMBINATION BUILDINGS

Combination buildings to reduce loads

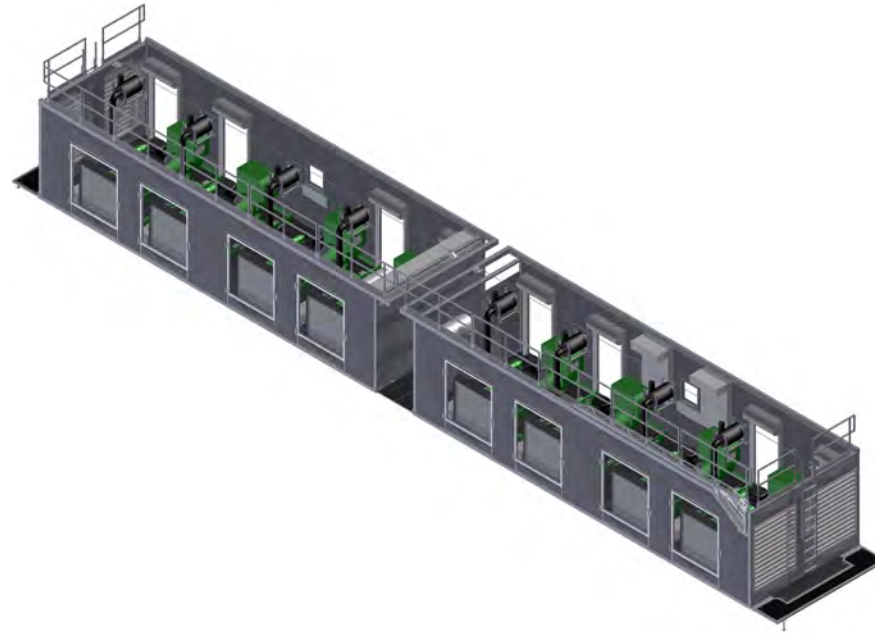
INCLUDES

TC44, change houses, gen rooms, SCR's, manifolds, pipe tubs, remote degassers, and HPU's have commonly been combined

Designed and fabricated to suit customer requests and required equipment
Combination units depend on equipment size and spacings

SUPPORTING BUILDINGS

Products shown are just a sample of Ja-Co's capabilities. Ja-Co is not limited to what is shown.



GENERATOR BUILDINGS

Generators as requested by customer

STYLE

Single units, or double units (end to end, side to side, and complex designs)

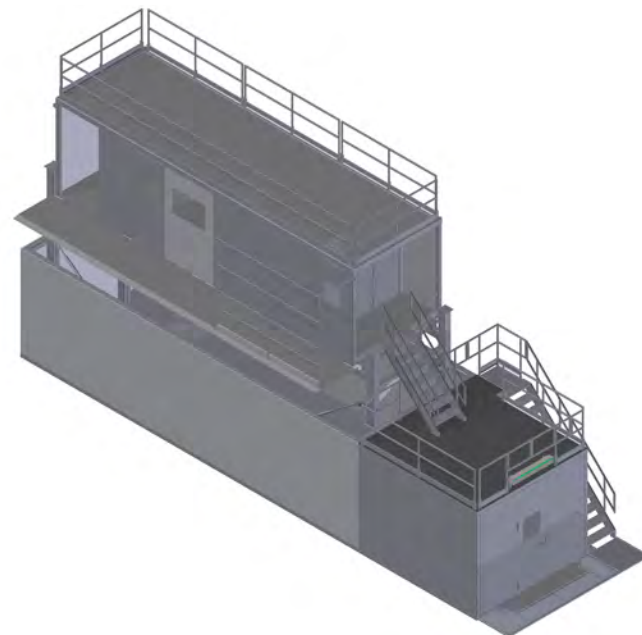
INCLUDES

Fabricated or purchased louvers (steel or aluminum)

Roof venting hatches as required

Fabricated steel plugboards

Ground rods, furniture, etc. upon request



WATER TANK/ DOGHOUSE

DESIGN

Designed and fabricated to suit customer requests and required equipment

Comes with the option of having a engineered hydraulic lift system or pull type lift system

Doghouse can be equipped with a pullout section to accommodate extra room

INCLUDES

Standard design contains a suck out system for the water tank, stairs and handrails

Designed and fabricated to suit customer requests and required equipment

SUPPORTING BUILDINGS

Products shown are just a sample of Ja-Co's capabilities. Ja-Co is not limited to what is shown.

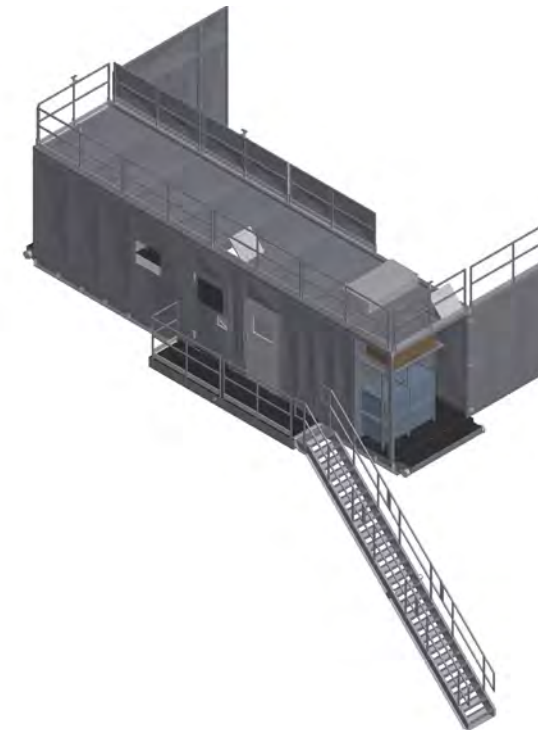


TOP DRIVE SUPPORT UNIT

Designed to sit on the sub for walking systems or on lease skidded units

INCLUDES

Complete with accommodations for electrical and hydraulics as required



DOGHOUSES (DRILLER SIDE BUILDINGS/OFF DRILLER SIDE BUILDINGS)

Built to customer requirements

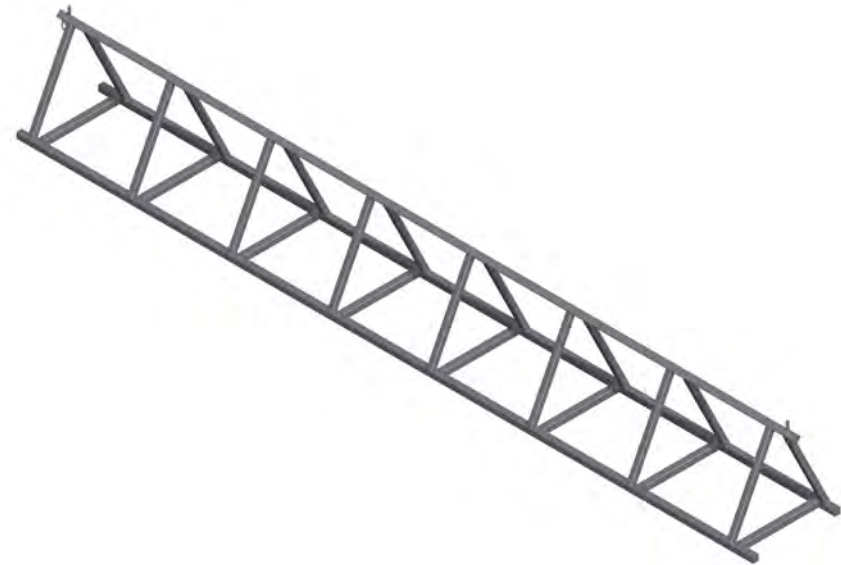
DESIGN

Doghouses are typically complete with control, lunch, electrical, hydraulic, change and meeting rooms.

Designed and fabricated to suit customer requests and required equipment

RATED PIPE RACKS

Products shown are just a sample of Ja-Co's capabilities. Ja-Co is not limited to what is shown.



ENGINEERED PIPE RACKS

STANDARD SIZES

42", 48", 53", and 59"

MAX LOAD CAPACITY

Dependent with each size variation

STYLE

Custom pipe racks available upon request



ENGINEERED LOW PROFILE PIPE RACKS

STANDARD SIZES

18"

MAX LOAD CAPACITY

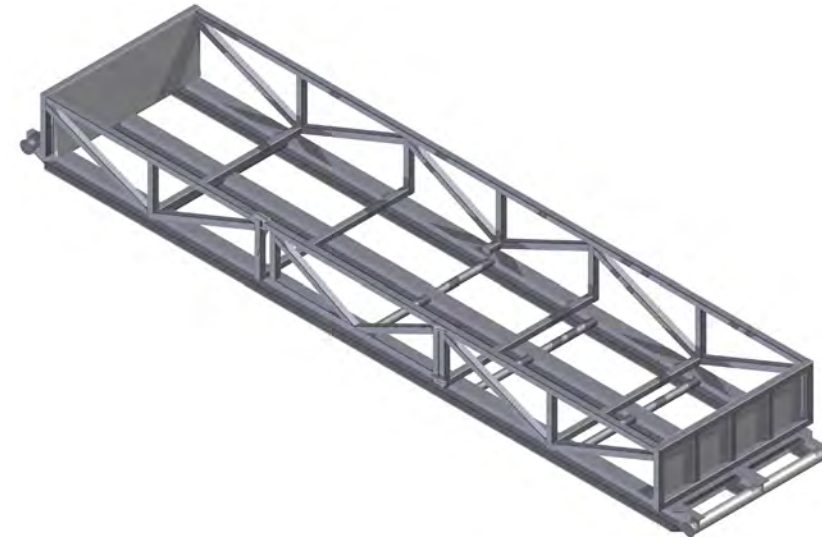
Dependent with each size variation

STYLE

Custom pipe racks available upon request

PIPE TUBS

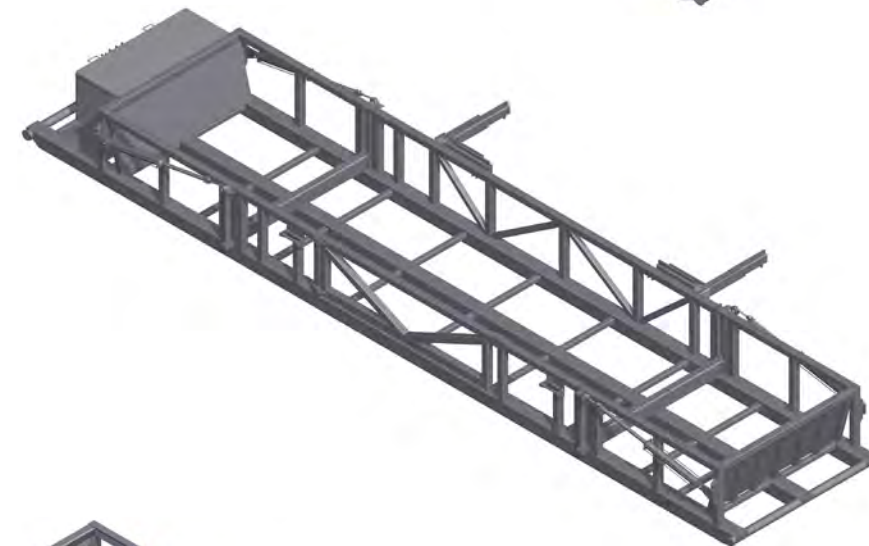
Products shown are just a sample of Ja-Co's capabilities. Ja-Co is not limited to what is shown.



NON-HYDRAULIC PIPE TUB

DRILL PIPE DESIGN

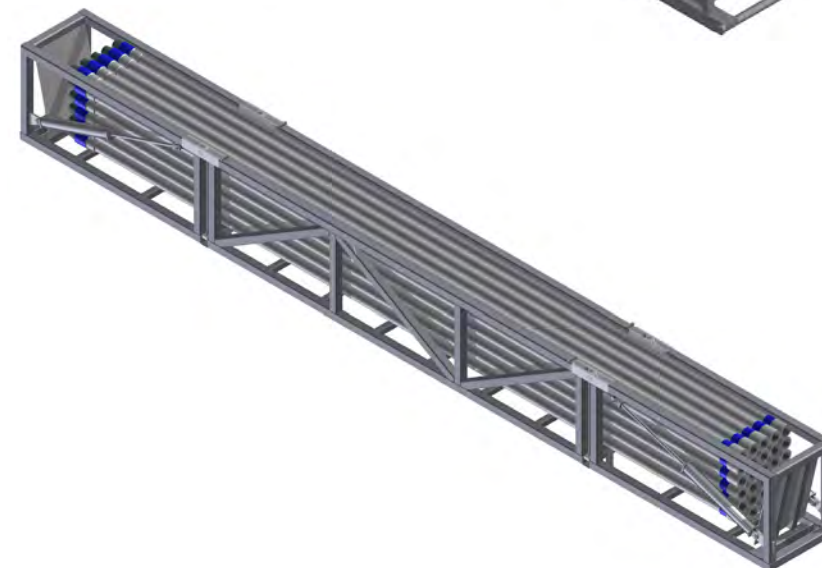
Range 2 and Range 3



HYDRAULIC PIPE TUB

DRILL PIPE DESIGN

Range 2 and Range 3



CUSTOM PIPE TUB

As requested by customer

CATWALK

Products shown are just a sample of Ja-Co's capabilities. Ja-Co is not limited to what is shown.

HYDRAULIC CATWALK

Available as a small or large catwalk
(small skate travels the length of the deck, large skate travels up the veedoor).

Catwalk comes complete with transfer bars, kicker and indexers, skate drives, hydraulic levelling, hydraulic rack levelling with safety fail, veedoor and handrails, electrical complete to suit your rig power with remote control, and hydraulics.
Pipe presentations available on request

MAX PIPE LENGTH
48'6"

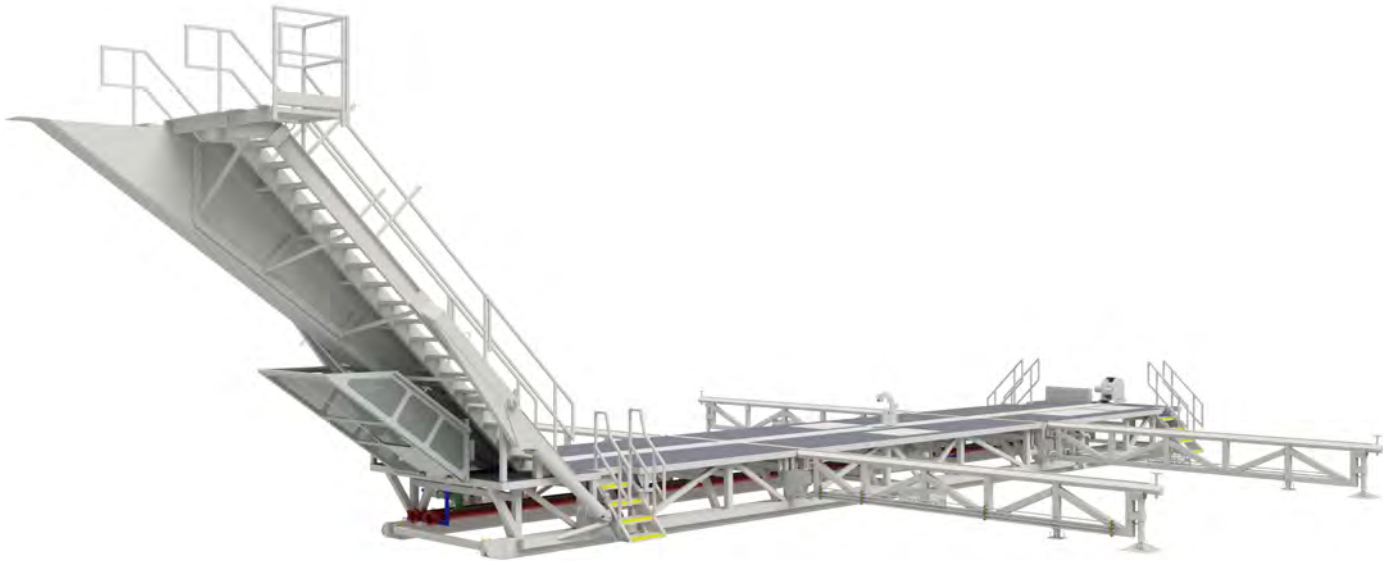
STANDARD MAX PIPE WEIGHT 10,000 lb
(custom for higher capacities)

DESIGN
Drum and cable drive system

Catwalks can be designed and engineered to suit any application, if there's an option you need, we will incorporate it

STANDARD DECK HEIGHT
42" (custom if required)

MAX SUB HEIGHT
30'-6"



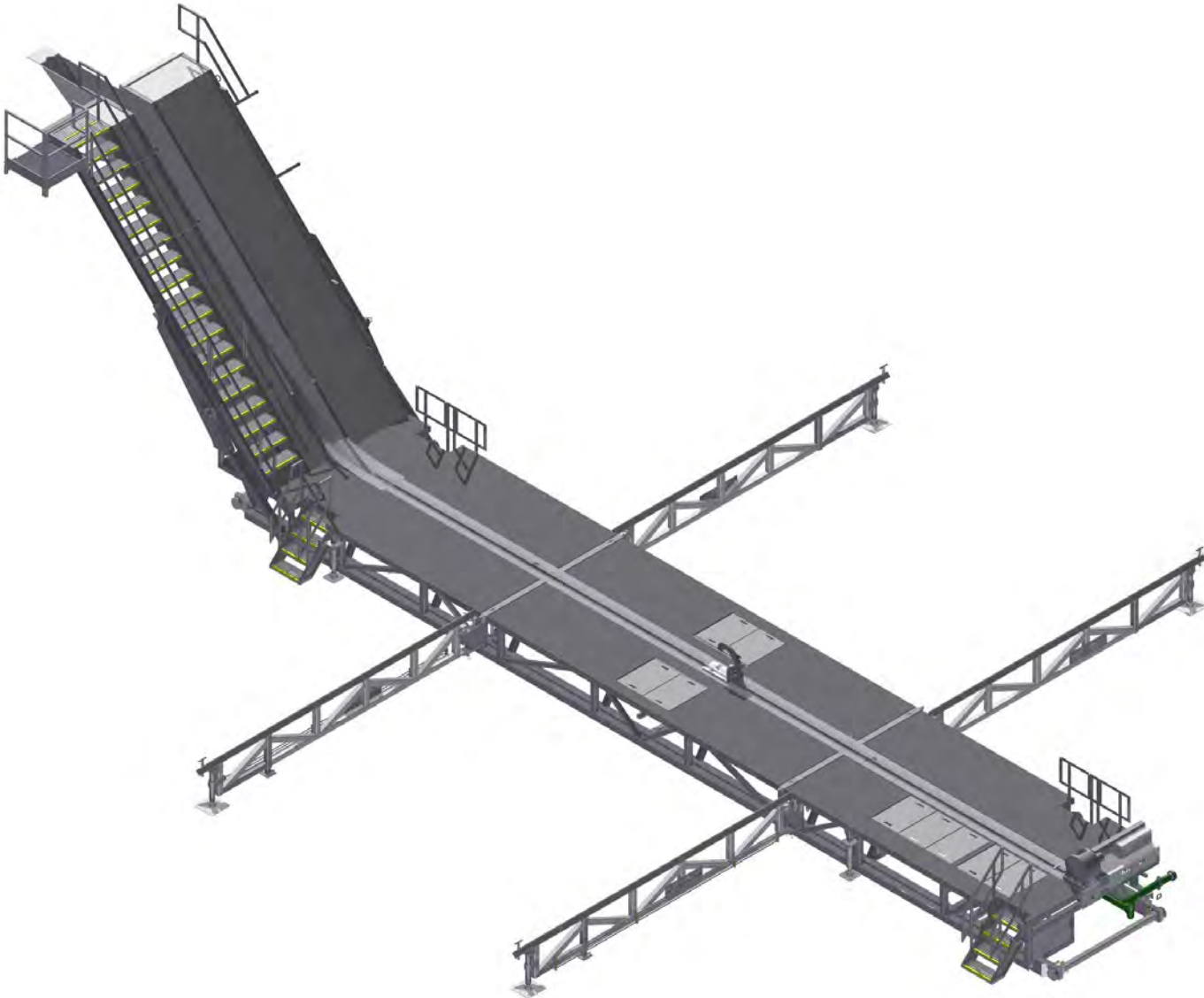
ADDITIONAL OPTIONS

- Wheel Moving System with an optional tow bar
- Choke line boxes
- Return lines and vents lines
- Manifold Building
- Wellhead clearance
- Fiberglass stairs
- Addition pipe racks or custom rack lengths Hydraulic flip veedoor

CATWALK

Products shown are just a sample of Ja-Co's capabilities. Ja-Co is not limited to what is shown.

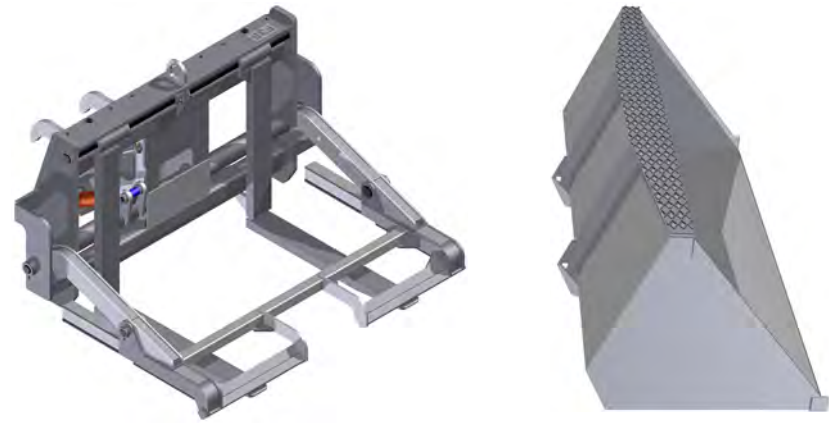
- 100+ CATWALKS FABRICATED AND IN SERVICE TO DATE
- Minimal Maintenance
- Lower Price Point
- Longer Life Span
- Faster Pipe Delivery



SEE PAGE 49-50 FOR STOCK REPLACEMENT COMPONENTS

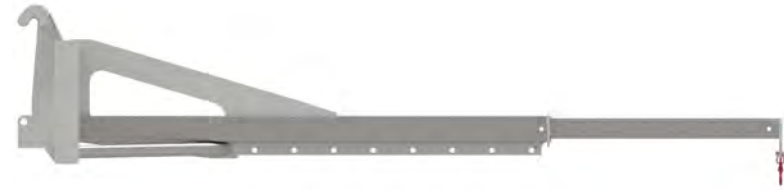
MISCELLANEOUS

Products shown are just a sample of Ja-Co's capabilities. Ja-Co is not limited to what is shown.



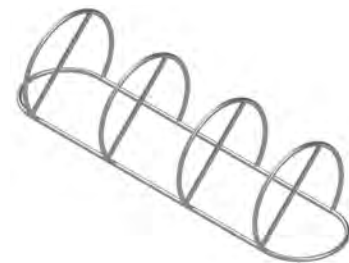
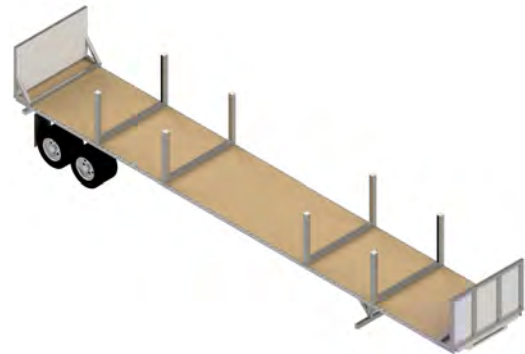
EQUIPMENT ATTACHMENTS

Ja-Co is able to fabricate a wide range of attachments for loaders, fork lifts, bob cats, etc. Products range from yard levelling beams, grapplers, jib-booms, buckets, and forks.



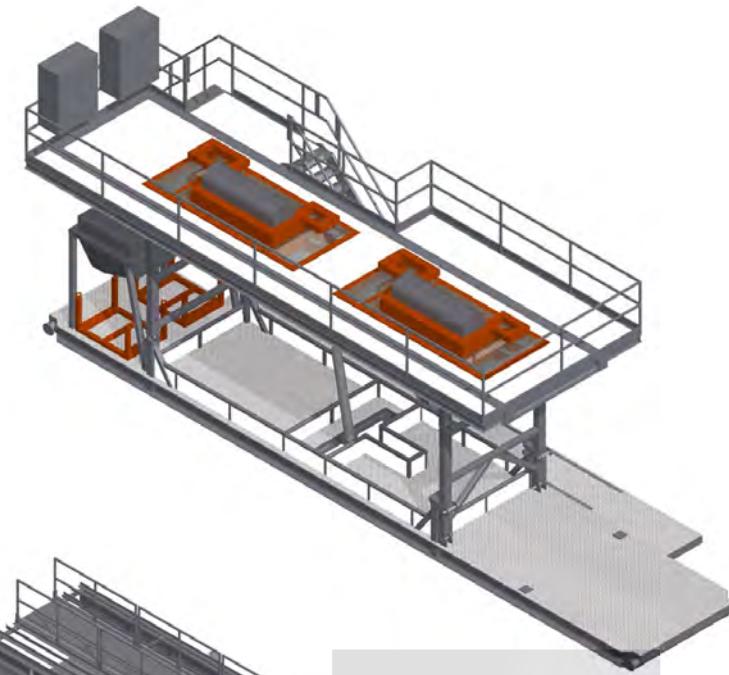
MISCELLANEOUS FABRICATION

Ja-Co has done everything from truck redecking with headache racks, trailer modifications, bike racks, incinerator shells to fire place gazebos!



MISCELLANEOUS

Products shown are just a sample of Ja-Co's capabilities. Ja-Co is not limited to what is shown.



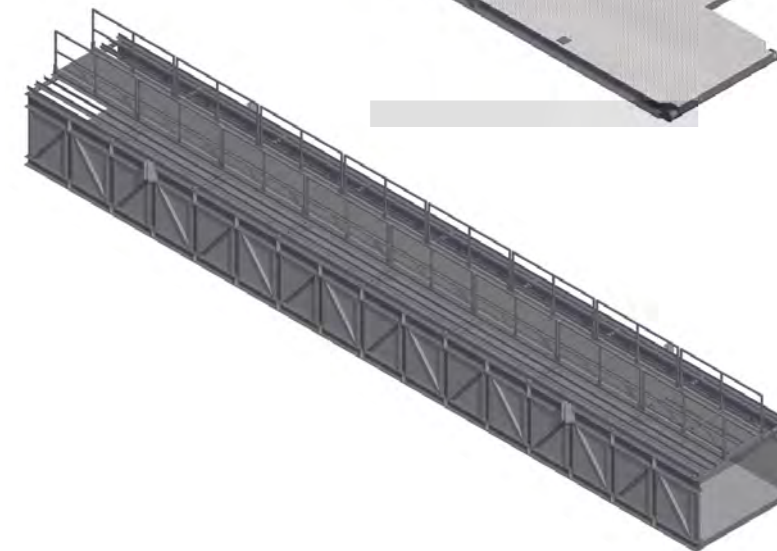
CENTRIFUGE STAND

STYLES

Canilever lift
Telescoping lift

DESIGN

To suit customer request



RIVER FLUME

SIZE

20', 40', 60' lengths

DESIGN

As requested by customer



PIPING

With in-house B-Pleasure welders Ja-Co Welding and Consulting is more than proficient to supply our customers with the piping assemblies they desire

We fabricate high pressure and low pressure piping systems threaded or welded up to 20,000 psi.

b31.3 compliant

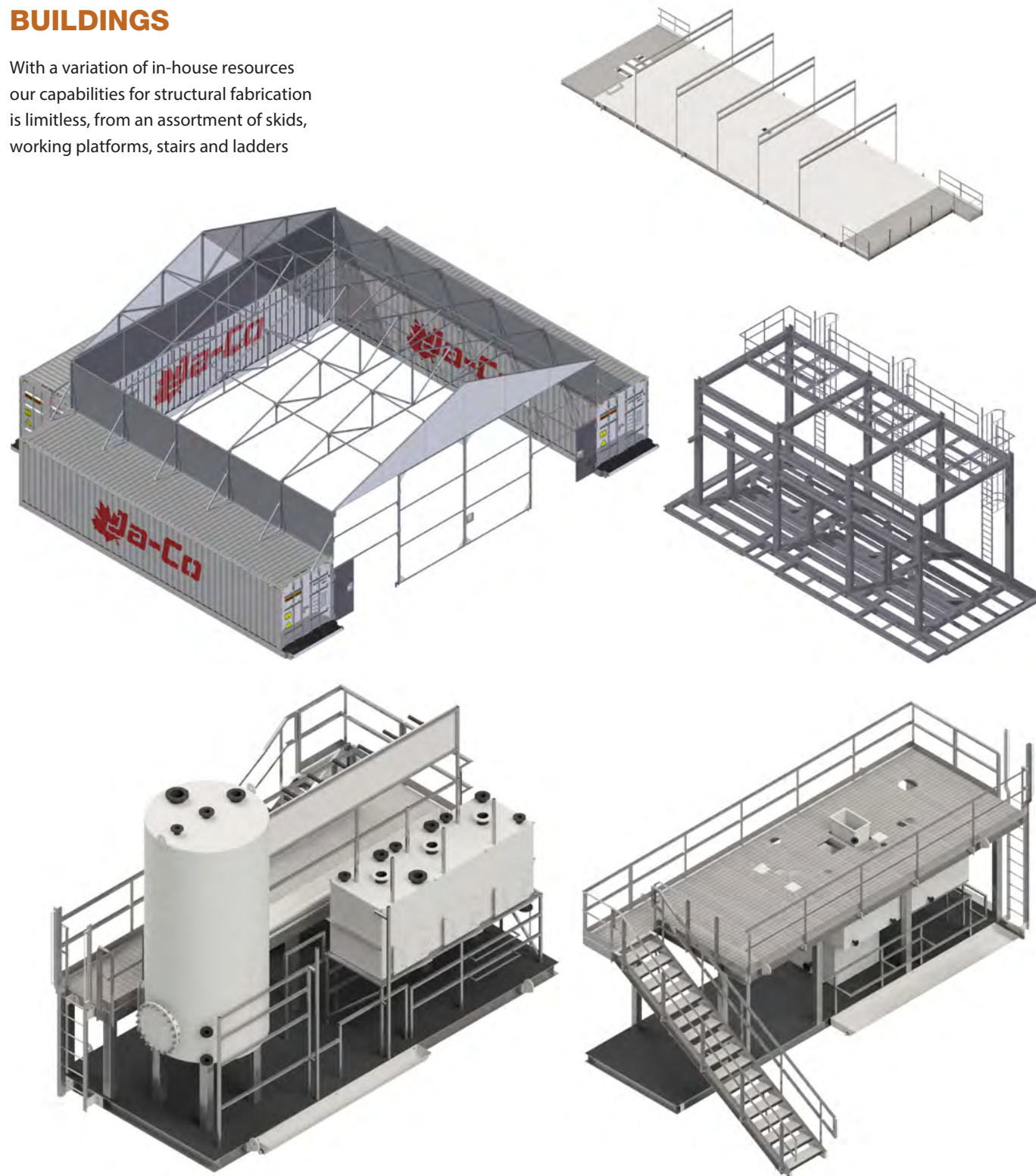
(Ja-Co manufactures fittings, see our fittings on page 19-20)

STRUCTURAL

Products shown are just a sample of Ja-Co's capabilities. Ja-Co is not limited to what is shown.

STRUCTURAL BUILDINGS

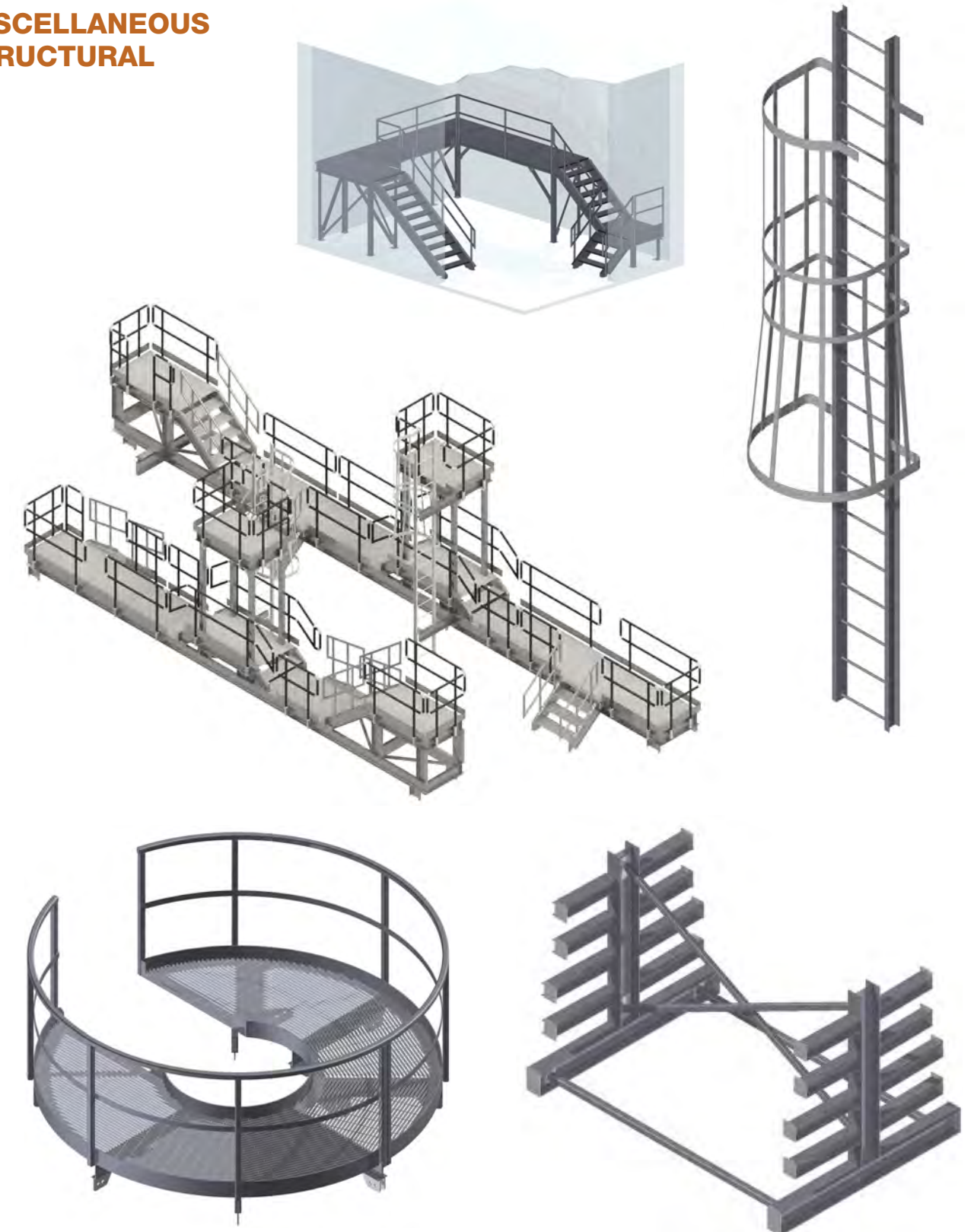
With a variation of in-house resources our capabilities for structural fabrication is limitless, from an assortment of skids, working platforms, stairs and ladders



STRUCTURAL

Products shown are just a sample of Ja-Co's capabilities. Ja-Co is not limited to what is shown.

MISCELLANEOUS STRUCTURAL



TANK COMPONENTS

Products shown are just a sample of Ja-Co's capabilities. Ja-Co is not limited to what is shown.



BRIDGE VALVE

SIZES (TEES AND ELBOWS)
4", 6", 8", 10", and 12"

STOCK
#300-00119 VALVE BRIDGE 6" TEE
#300-00118 VALVE BRIDGE 6" ELBOW
#300-00121 VALVE BRIDGE 8" TEE
#300-00120 VALVE BRIDGE 8" ELBOW
#300-00123 VALVE BRIDGE 10" TEE
#300-00122 VALVE BRIDGE 10" ELBOW

STOCK ACCOMMODATIONS
8'0" Cut to suit tank height (custom heights available upon request)
4" & 12" CUSTOM ORDER



ARCTIC DUMP

SIZES
6"

TANK HEIGHT ACCOMMODATIONS
8'-0" (custom heights available upon request) made to order



MIXING HOPPER

SIZES
6" (complete with Framers Bean)



TROUGH DUMP

SIZES
12" and 18"

STOCK
#300-00106 MUDTROUGH DUMP - 12"
#300-00107 MUDTROUGH DUMP - 18"



MUD GUN

SIZES
2" and 3"

FITTING OPTIONS
Threaded and welded (complete with purchased Radial Educator or fabricated gun nozzle) _ *SVWfa adVd*



CHEMICAL BARREL

MOTOR SPECIFICATION
110 V – 3/4 HP (subject to customer request) _ *SVWfa adVd*
VOLUME CAPACITY
98 gallons (subject to customer request)
Made to order

TANK COMPONENTS

Products shown are just a sample of Ja-Co's capabilities. Ja-Co is not limited to what is shown.



EQUALIZERS

E;L7E
10" (custom heights available upon request) made to order

STYLES
Trailer jack lever
Winch/cable



AGITATOR

;? B7>>ADE;L7E
24", 32", 40", 42", and 44" (custom heights available upon request)

;@5>G67E
Stabilizer cup
Motor
Gearbox
Agitator mounting plate



DEGASSER

E;L7E
30", 36", and 24" (custom diameter available upon request) made to order

6793EE7DABF;A@
Drop style (to accommodate shipping heights) or permanent mount

3H3;>34>7H7@F >@7E;L7E
As required for well type classification

;@5>G67E
8" inspection hatch



PUMP STANDS

ACCOMODATING PUMP STYLES

Over/under
Inline coupled
Direct drive
Horizontal/vertical

STOCK
Style shown in image
"% "Ž " #" + BG? B EF3@6 Ž? ' "
"% "Ž " ##" BG? B EF3@6 Ž? ("

CATWALK COMPONENTS

Products shown are just a sample of Ja-Co's capabilities. Ja-Co is not limited to what is shown.



CATWALK SHEAVE

STOCK# 300-00088 (HCV-03-505)

DESIGN
12" standard replacement sheave with bearings. Accommodates 5/8 diameter wire rope



DECK PINS

STOCK# 300-00146 (DROP DECK PIN RH)

STOCK# 300-00147 (DROP DECK PIN LH)

DESIGN
Extends to 3" above deck



DRIVE DRUMS

STYLES
Left hand, right hand, double drive drum

DESIGN
Accommodates 5/8 diameter cable

STOCK # 300-00098 SM. SINGLE DRUM 14in
STOCK # 300-00085 LRG. DOUBLE 14in
STOCK # 300-00161 SPLIT DRUM RH 15in
STOCK # 300-00160 SPLIT DRUM LH 15in



VERTICAL CABLE GUIDE

DESIGN
Guide roller assembly for catwalk drive system
STOCK# 300-00155



TRANSITION ROLLER

DESIGN
Replacement transition roller
Accommodates 5/8 diameter cable
STOCK # 300-00094



PIVOT BOX

SIZES
Large and small
DESIGN
Accommodates both drill and casing racks. Built to order



ELECTRICAL BOX GUARD

Customization available upon customer request. Built to order

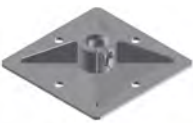


SKATE GUARD

DESIGN
Bolt on guard to prevent pipe slipping out of skate in forward movement
STOCK# 300-00171
LARGE GUARD
STOCK# 300-00173
SMALL GUARD

CATWALK COMPONENTS

Products shown are just a sample of Ja-Co's capabilities. Ja-Co is not limited to what is shown.



CYLINDER PADS

DESIGN
Standard designs for catwalk levelling cylinders and rack levelling cylinders

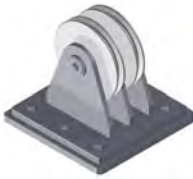
STOCK # 300-00096
LEVEL CYLINDER PAD
STOCK # 300-00092
RACK CYLINDER PAD



HORIZONTAL ROLLER

DESIGN
Accommodated with double sealed bearings

STOCK # 300-00100
HORIZONTAL ROLLER



IDLE SHEAVE

Replacement idle sheave
STOCK# 300-00090
LARGE
STOCK# 300-00101
SMALL

DESIGN
Designed for duel cable system catwalks.



SINGLE DRIVE DRUM ADAPTOR

STOCK# 300-00086
Replacement adaptor for drive to drum



LARGE CATWALK SKATE

STOCK# 300-00140
REPLACEMENT SLIDER KIT
STOCK# 300-00176



SMALL CATWALK SKATE

STOCK# 300-00102
REPLACEMENT SLIDER KIT
STOCK# 300-00177

HARDWARE

Products shown are just a sample of Ja-Co's capabilities. Ja-Co is not limited to what is shown.



5" FURNITURE HINGE (3 PIECE)

INCLUDES
3 pieces for assembly
Grease nipple for lubrication

MATERIAL
C1018 Round Bar

MAXIMUM CAPACITY
200 lb per pair
STOCK# 300-00076



7" MAN DOOR HINGE

INCLUDES
3 pieces for assembly
(welded to steel pads)
Incorporated grease nipple
for lubrication

MATERIAL
C1018 Round Bar

MAXIMUM CAPACITY
250 lb per pair
STOCK# 300-00103



SPRING BALL LATCH

USES
Pull style door hardware

STOCK# 200-01078



7" BARREL HINGE

INCLUDES
3 pieces for assembly
Grease nipple for lubrication

MATERIAL
C1018 Round Bar

MAXIMUM CAPACITY
250 lb per pair
STOCK# 300-00137 7in Barrel Hinge
350 lb per pair (HD)
STOCK# 300-00175 7in HD Barrel Hinge



DOOR BOX

STYLES
Locking mechanical large
Locking mechanical small
Pull style ball latch

MATERIAL
Formed 10 Gauge Steel

STOCK# 300-00143 Large
STOCK# 300-00144 Small

FURNITURE

Products shown are just a sample of Ja-Co's capabilities. Ja-Co is not limited to what is shown.



LOCKERS

ASSEMBLIES
1, 2, 3, and 4 banks (*custom heights available upon request*)

SIZES
Available upon request

INCLUDES
1 shelf
3 hangers
4" legs
Mesh partition and bottom
Overhead storage

MATERIAL
11 Gauge Mild Steel



SITTING BENCH (STORAGE)

DESCRIPTION
Incorporates storage space while
being able to utilize this bench for its
intended purposes

MATERIAL
11 Gauge Mild Steel

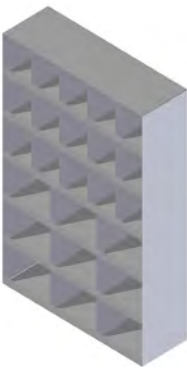


CABINETS

STYLE
Overhead cabinets
Floor cabinets
Storage cabinets
Corner cabinets
(*customization available upon request*)

SIZES
Available upon request

MATERIAL
11 Gauge Mild Steel



BOLT BINS

SIZES
No standard sizes stocked (*fabricated from customer's customization*)

INCLUDES (STANDARD)
5 shelves with 2" lips
Dividers

FURNITURE

Products shown are just a sample of Ja-Co's capabilities. Ja-Co is not limited to what is shown.



KNOWLEDGE BOX

DESCRIPTION
Includes a lower cabinet combined with an upper storage area used typically to store blueprints, sketches, and other paperwork

SIZES
Available upon request

MATERIAL
11 Gauge Mild Steel



BATTERY BOX

SIZES
To accomodate various battery sizes
(customization available upon request)

INCLUDES
Removable lid
Tie downs
Latches

MATERIAL
11 Gauge Mild Steel



OIL BINS

SIZES
Fabricated from customer's requirements

INCLUDES
Sight Glass
Brass Gate Valve
Oil Bin Stand
Drip Trays



PLUG BOARD CABINET

SIZES
To accommodate various plug board sizes

INCLUDES
Front and back doors
Header or footer on one side only

MATERIAL
11 Gauge Mild Steel



TOOL BOARD

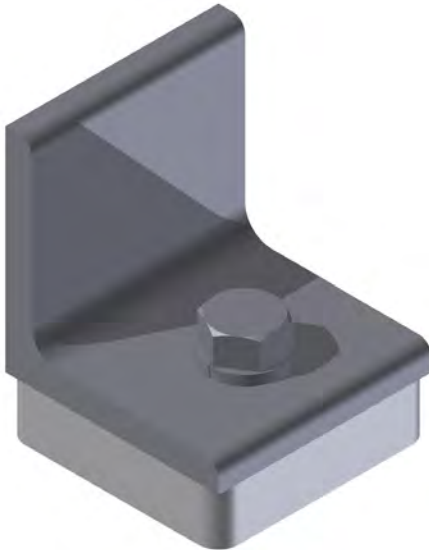
HOOK STYLES
Round Bar
Formed Plate

BOARD STYLES
Table Top
Full Verticle

MATERIAL
Formed Plate

TIE DOWNS

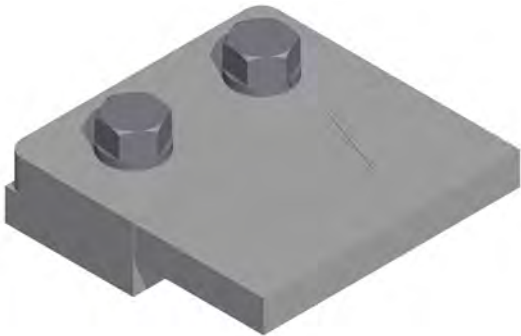
Products shown are just a sample of Ja-Co's capabilities. Ja-Co is not limited to what is shown.



FURNITURE TIE DOWNS

Customization available upon request

Standard design uses a bolt on application for easy transport



V-BLOCK MOTOR TIE DOWN

DESIGN
Standard design uses a bolt on application for easy transport



PUMP/MOTOR GUIDE

Customization available upon request

MISCELLANEOUS

Products shown are just a sample of Ja-Co's capabilities. Ja-Co is not limited to what is shown.



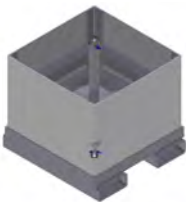
FIREPIT

Customization of size available upon customer request



GROUND ROD

APPLICATION
Used to ground buildings and other electrical components



ESCAPE LINE ANCHOR

APPLICATION
Used as a form of egress



MOUSE HOLE SPRINGS

Customization available upon request



HANDRAILS

SIZES
42" tall

OPTIONS
Removable
Fixed
Folding
Steel
Aluminium
(Comes with 6" formed kick plate)



STAIRS

Customization available upon request

TREAD OPTIONS
Steel Grip Strut
Fiber Grate Stair Treads

MATERIALS
Formed Stringers
Channels
Aluminum
Steel

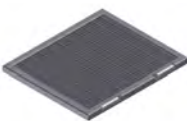
MISCELLANEOUS

Products shown are just a sample of Ja-Co's capabilities. Ja-Co is not limited to what is shown.



CUSTOM BURNS

Ja-Co burn or waterjet custom designs, see the Machines section on page 8 for our capabilities



WALKWAYS

Customization available upon request

MATERIAL
Fabricated from steel and/or aluminum

GRATING OPTIONS
Serrated Grating
Fiber Grate Grating
Checker Plate



TARP STRAPPING

MATERIAL
1/2" Round Bar (to accomodate building exposure)



TROLLEY BEAMS

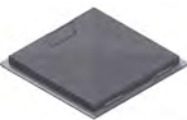
Customization available upon request
Engineer approved design
Load rating as required



BOOM ARMS

Customization available upon request

INCLUDES
Pivoting Pipe Sleeve concept with Grease Nipple incorporation



HATCH WAYS

Customization available upon request

INCLUDES
Angle iron frame capped off with cross broken gauged plate incorporated with a pinning locking system

MISCELLANEOUS

Products shown are just a sample of Ja-Co's capabilities. Ja-Co is not limited to what is shown.



RETRIEVAL ARMS

APPLICATION

Material handling and man hoisting

MATERIAL

Fabricated from steel and/or aluminum

DESIGN

Either split folding assembly or as a one piece assembly

Winches and capacity dependent on product purposes

Retrieval arms provided with load rating, engineering certification upon request



BELT GUARD

DESIGN

Fabricated to accomodate various pump models



FOLDING LIGHT STAND

DESCRIPTION

Incorporates folding handrail brackets and uses pipes or HSS for light fixture mounting



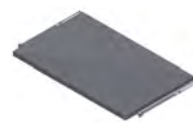
3 STAGE LIGHT STAND

DESCRIPTION

Standard version uses a telescopic design for light fixture mounting

MATERIAL

Pipe or HSS



AIR FLOW HATCH WAY

Customization available upon request

DESCRIPTION

Uses angle iron frame capped off with cross broken gauged plate incorporated with a pinning locking system

INCLUDES

Self-locking arms



MISCELLANEOUS TRANSPORT SYSTEMS

Customization available upon request

DESIGN

As per customer request

Product shown is a handling frame for barrels. Design and engineered products to suit customers requirement



